

The CAT logo is displayed in black on a yellow square background. The letters 'CAT' are in a bold, sans-serif font, with a stylized mountain peak integrated into the letter 'A'. A registered trademark symbol (®) is located to the upper right of the 'T'.

## CAT EXCAVATOR EVOLUTION SERIES

*details on page 59*



*Real Replicas*

# Scale Model Replicas

DIECAST MASTERS COMPANY LIMITED

# Cat® 836 Soil Compactor

ITEM NUMBER

**85763**

Scale 1:50



*Real Machine Shown*

# Cat® 950 Wheel Loader

ITEM NUMBER

**85770**

Scale 1:50



*Real Machine Shown*

# Cat® AD45 Underground Mining Truck

ITEM NUMBER

**85717**

Scale 1:50



*Real Machine Shown*

# Cat® R2900 XE Underground Mining Loader



ITEM NUMBER

**85719**

Scale 1:50

*Real Machine Shown*

**COMING SOON**

# Cat® 777 Mining Truck

ITEM NUMBER

**85713**

Scale 1:50



*Real Machine Shown*

# Cat® 995 Wheel Loader

ITEM NUMBER

**85716**

Scale 1:50



*Real Machine Shown*

# Cat<sup>®</sup> 796AC Mining Truck

ITEM NUMBER

**85775**

Scale 1:50



*Real Machine Shown*

# Cat<sup>®</sup> D8 Dozer

ITEM NUMBER

**85757**

Scale 1:50



*Real Machine Shown*

**COMING SOON**

# Cat® D8 Dozer Waste Handler Configuration

ITEM NUMBER

**85758**

Scale 1:50



*Real Machine Shown*

# Cat® 785 Mining Truck

ITEM NUMBER

**85773**

Scale 1:50



*Real Machine Shown*

# Cat<sup>®</sup> 789 Mining Truck

ITEM NUMBER

**85774**

Scale 1:50



*Real Machine Shown*

# Cat<sup>®</sup> 25 Tractor

ITEM NUMBER

**85679**

Scale 1:16



**COMING SOON**

# HIGH LINE SERIES™

## HYDRAULIC EXCAVATORS

85597	1:50 Cat 301.7 CR Mini Hydraulic Excavator	11
85596	1:50 Cat 308 CR Mini Hydraulic Excavator	11
85592	1:50 Cat 309 CR Mini Hydraulic Excavator	12
85239	1:32 Cat 308E2 CR SB Mini Hydraulic Excavator	12
85957	1:50 Cat 315 Hydraulic Excavator	13
85569	1:50 Cat 320 Hydraulic Excavator	13
85570	1:50 Cat 320 GC Hydraulic Excavator	14
85657	1:50 Cat 323 Hydraulic Excavator	14
85571	1:50 Cat 323 Next Generation Hydraulic Excavator	15
85585	1:50 Cat 330 Next Generation Hydraulic Excavator	15
85925	1:50 Cat 335F L Hydraulic Excavator	16
85586	1:50 Cat 336 Next Generation Hydraulic Excavator	16
85943	1:50 Cat 349F L XE Hydraulic Excavator	17
85274	1:50 Cat 374D L Hydraulic Excavator	17
85959	1:50 Cat 395 Hydraulic Excavator – Mass Excavation Version	18
85709	1:50 Cat 395 Next Generation Hydraulic Excavator – General Purpose Version	18
85956	1:50 Cat M318 Wheeled Excavator	19
85663	1:50 Cat 352 Ultra High Demolition Hydraulic Excavator	19
85661	1:50 Cat M323F Railroad Wheeled Excavator – Safety Yellow	20
85662	1:50 Cat M323F Railroad Wheeled Excavator – Cat Yellow	20

## MATERIAL HANDLER

85958	1:50 Cat MH3040 Material Handler	21
-------	----------------------------------	----

## BLASTHOLE DRILL

85581	1:50 Cat MD6250 Rotary Blasthole Drill	21
-------	--	----

## TRACK-TYPE TRACTORS

85554	1:50 Cat D6 XE LGP Track-Type Tractor – VPAT Blade	22
85553	1:50 Cat D6 Track-Type Tractor – SU Blade	22
85566	1:50 Cat D8T Track-Type Tractor – 8U Blade	22
85944	1:50 Cat D9T Track-Type Tractor	23
85673	1:50 Cat D3 Dozer	23
85951	1:50 Cat D5 LGP VPAT Dozer	24
85952	1:50 Cat D5 LGP Fire Suppression Dozer	24
85955	1:50 Cat D5 XR Fire Suppression Dozer	25
<b>85757</b>	<b>1:50 Cat D8 Dozer</b>	<b>5</b>
<b>85758</b>	<b>1:50 Cat D8 Dozer Waste Handler Configuration</b>	<b>6</b>
<b>85711</b>	<b>1:50 Cat D10 Dozer</b>	<b>25</b>
85567	1:50 Cat D11T CD Carrydozer	26
85604	1:50 Cat D11 Dozer – TKN Design	26

## WHEEL LOADERS

85557	1:50 Cat 906M Wheel Loader	27
85294	1:32 Cat 910K Wheel Loader	27
<b>85770</b>	<b>1:50 Cat 950 Wheel Loader</b>	<b>2</b>
85914	1:50 Cat 950M Wheel Loader	28
85682	1:50 Cat 966G Wheel Loader	28
85686	1:50 Cat 966 Wheel Loader	29
85683	1:50 Cat 972 XE Wheel Loader	29
85684	1:50 Cat 980 Wheel Loader	30
85685	1:50 Cat 982 XE Wheel Loader	30
<b>85716</b>	<b>1:50 Cat 995 Wheel Loader</b>	<b>4</b>
<b>85763</b>	<b>1:50 Cat 836 Soil Compactor</b>	<b>2</b>

## BACKHOE LOADERS

85233	1:50 Cat 420F2 IT Backhoe Loader	31
85249	1:50 Cat 432F2 Side Shift Backhoe Loader	31

## OFF-HIGHWAY TRUCKS

<b>85713</b>	<b>1:50 Cat 777 Mining Truck</b>	<b>4</b>
<b>85773</b>	<b>1:50 Cat 785 Mining Truck</b>	<b>6</b>
<b>85774</b>	<b>1:50 Cat 789 Mining Truck</b>	<b>7</b>
<b>85775</b>	<b>1:50 Cat 796AC Mining Truck</b>	<b>5</b>
85528	1:50 Cat 745 Articulated Truck	32
85670	1:50 Cat 794AC Mining Truck	32
85655	1:50 Cat 797F Tier 4 Mining Truck	33
85671	1:50 Cat 798AC Mining Truck	33

## MOTOR GRADERS

85667	1:50 Cat 150 Motor Grader	34
85545	1:50 Cat 14 Motor Grader	34
85507	1:50 Cat 16 Motor Grader	35
85552	1:50 Cat 24 Motor Grader	35

## ENGINES

85707	1:12 Cat C32B Marine Engine	36
85706	1:25 Cat G3616 Gas Compression Engine	36

## FORESTRY

85917	1:50 Cat 988K Wheel Loader with Log Grapple	37
85932	1:50 Cat 555D Wheel Skidder	37

## PAVING MACHINES

85594	1:50 Cat CB13 Tandem Vibratory Roller – ROPS	38
85595	1:50 Cat CB13 Tandem Vibratory Roller – Cab	38
85589	1:50 Cat CS11 GC Vibratory Soil Compactor	39
85593	1:50 Cat CB2.7 Utility Compactor	39

## UNDERGROUND MINING

<b>85717</b>	<b>1:50 Cat AD45 Underground Mining Truck</b>	<b>3</b>
<b>85719</b>	<b>1:50 Cat R2900 XE Underground Mining Loader</b>	<b>3</b>
85516	1:50 Cat AD60 Underground Articulated Truck	40

## COMPACT CONSTRUCTION

85676	1:50 Cat 242D3 Skid Steer Loader	40
85677	1:50 Cat 259D3 Compact Track Loader	41
85678	1:32 Cat 272D3 Skid Steer Loader	41
85602	1:16 Cat 272D2 Skid Steer with Attachments	42
85603	1:16 Cat 297D2 Multi-Terrain Loader with Attachments	42

## 1:125

85542	1:125 Cat 657G Wheel Tractor Scraper	43
85548	1:125 Cat 745 Articulated Truck	43

## SPECIAL BLACK FINISH

85957 <sub>BK</sub>	1:50 Cat 315 Excavator – Black	44
85676 <sub>BK</sub>	1:50 Cat 242D3 Skid Steer Loader – Black	44
85677 <sub>BK</sub>	1:50 Cat 259D3 Compact Track Loader – Black	44



28007	1:16 RC Cat 272D3 Skid Steer Loader	45
<b>28008</b>	<b>1:16 RC Cat 297D2 Multi-Terrain Loader</b>	<b>45</b>

## CONSTRUCTION RC

23005	1:35 RC Cat 420F2 IT Backhoe Loader	46
28005	1:16 RC Cat 320 Hydraulic Excavator	47
23001	1:35 RC Cat 336 Hydraulic Excavator	48
23002	1:35 RC Cat D7E Track-Type Tractor	48
23003	1:35 RC Cat 950M Wheel Loader	49
23004	1:35 RC Cat 770 Mining Truck	49
25001	1:24 RC Cat 336 Hydraulic Excavator	50
25002	1:24 RC Cat D7E Track-Type Tractor	50
25003	1:24 RC Cat 950M Wheel Loader	51
25004	1:24 RC Cat 745 Articulated Truck	51
25005	1:24 RC Cat 336 Hydraulic Excavator	52
25006	1:24 RC Cat 770 Mining Truck	52

Items in Red are New or Coming Soon.





85579 1:50 Cat 966A Wheel Loader 53  
 85577 1:50 Cat D7C Track-Type Tractor 53

**85679 1:16 Cat 25 Tractor 7**



**85755 1:50 Cat 420F2 IT Weathered Backhoe Loader 54**  
**85756 1:50 Cat 770 Weathered Off-Highway Truck 54**  
 85703 1:50 Cat 966M Weathered Wheel Loader 55  
 85704 1:50 Cat 745 Weathered Articulated Truck 55

## TRANSPORT SERIES

85668 1:50 Cat CT660 Day Cab Tractor with Ox Bodies Dump Bed 56  
 85664 1:50 Cat CT660 Day Cab Tractor with Metal McNeilus Concrete Mixer 56  
 85665 1:50 Peterbilt 579 UltraLoft Tractor with Cat Mural Trailer 57  
 85666 1:50 Cat CT660 Day Cab Tractor with Cat Mural Trailer 57  
 85599 International HX520 Tandem Tractor and XL 120 HDG Trailer with Cat 963K Track Loader 57



**85715 Excavator Evolution Series 59**  
 1:50 Cat 225 Hydraulic Excavator  
 1:50 Cat 323 Hydraulic Excavator  
 85562 Off-Highway Truck Evolution Series 60  
 1:50 Cat 769 Off Highway Truck  
 1:50 Cat 770 Off Highway Truck  
 85560 Motor Grader Evolution Series 61  
 1:50 Cat Diesel No. 12 Motor Grader  
 1:50 Cat 12M3 Motor Grader  
 85559 Track Loader Evolution Series 62  
 1:50 Cat 977D Traxcavator  
 1:50 Cat 963K Track Loader  
 85563 Scraper Evolution Series 63  
 1:50 Cat 621K Wheel Tractor Scraper  
 1:50 Cat No. 70 Scraper



85537 1:125 Cat 390F L Hydraulic Excavator 64  
 85538 1:125 Cat D11T Track-Type Tractor 65  
 85539 1:125 Cat 24M Motor Grader 65

## Commemorative SERIES

85252 1:50 Cat D11T Track-Type Tractor – Matte Silver 67  
 85517 1:50 Cat D11T Track-Type Tractor – Copper 68  
 85547 1:50 Cat 390F L Hydraulic Excavator – Gunmetal 69



**85765 1:50 Cat 420XE Backhoe Loader 70**  
 85636 1:64 Cat 320F L Hydraulic Excavator with Tools 70  
 85635 1:64 Cat 950M Wheel Loader with Log Fork 71  
 85637 1:64 Cat D11 Dozer 71  
 85639 1:64 Cat 745 Articulated Truck 71  
 85633 1:64 Cat CT660 OX Stamped Dump Truck 72  
 85630 1:64 Cat CB-13 Tandem Vibratory Roller – ROPS 72  
 85632 1:64 Cat CT660 McNeilus Bridgemaster Concrete Mixer 72  
 85631 1:64 Cat CB-13 Tandem Vibratory Roller – CAB 72  
 85694 1:64 Cat 385C L Hydraulic Excavator 73  
 85695 1:64 Cat 611 Wheel Tractor Scraper 73  
 85696 1:64 Cat 775E Off-Highway Truck 73  
 85697 1:64 Cat 988H Wheel Loader 73  
 85690 1:64 Cat 320F L Hydraulic Excavator 74  
 85691 1:64 Cat D6R Track-Type Tractor 74  
 85692 1:64 Cat 950M Wheel Loader 74  
 85693 1:64 Cat 272D2 Skid Steer Loader & 1:64 Cat 297D2 Compact Track Loader 74

## MICRO CONSTRUCTORS

85984 Cat Micro D8T Track-Type Tractor Keychain 75  
 85981 Cat Micro 320 Hydraulic Excavator Keychain 75  
 85985 Cat Micro 770 Off-Highway Truck Keychain 75  
 85986 Cat Micro 950M Wheel Loader Keychain 75  
 85980DB Assortment Pack in Clear Display Box 76  
 85980CB Assortment Pack in Closed Box 78

## HO SERIES

**85687 1:87 Cat 395 Next Generation Hydraulic Excavator – Mass Excavator Version 81**  
**85688 1:87 Cat 395 Next Generation Hydraulic Excavator – General Purpose Version 81**  
 85612 1:87 Cat M323F Railroad Wheeled Excavator – Safety Yellow 82  
 85656 1:87 Cat M323F Railroad Wheeled Excavator – Cat Yellow 82  
 85652 1:87 Cat 320D L Hydraulic Excavator with Attachments 83  
 85650 1:87 Cat 6060 Hydraulic Mining Front Shovel 83  
**85653 1:87 Cat 6060 Hydraulic Mining Front Shovel 84**  
 85651 1:87 Cat 6060 Hydraulic Mining Shovel 84  
 85261 1:87 Cat 772 Off-Highway Truck 85  
 85949 1:87 Cat 972M Wheel Loader 85  
 85177 1:87 Cat M318D Wheeled Excavator 85  
 85953 1:87 Cat D5 LGP VPAT Dozer 86  
 85659 1:87 Cat D11 Dozer – TKN Design 86  
 85512 1:87 Cat CT681 Concrete Mixer 86  
 85658 1:87 Cat 336 Next Generation Hydraulic Excavator 87  
 85520 1:87 Cat 12M3 Motor Grader 87  
 85130 1:87 Cat 730 Articulated Truck 87  
 85134 1:87 Cat 627G Wheel Tractor Scraper 88  
 85209 1:87 Cat D9T Track-Type Tractor 88  
 85263 1:87 Cat 450E Backhoe Loader 88  
 85262 1:87 Cat 320D L Hydraulic Excavator 89  
 85950 1:87 Cat 972M Wheel Loader with Log Fork 89  
 85948 1:87 Cat 966M Wheel Loader 89

## Progress Rail A Caterpillar Company

87001 1:87 Progress Rail HO Scale Train Set 90

Items in Red are New or Coming Soon.

# HIGH LINE SERIES™



*Packaged in collectible metal tins.*

# Cat® 301.7 CR Mini Hydraulic Excavator



ITEM NUMBER

**85597**

Scale 1:50

2¼ x 1½ x 17½ in.  
71 x 28 x 47 mm



DITCH BUCKET



AUGER



# Cat® 308 CR Mini Hydraulic Excavator

Next Generation Design

ITEM NUMBER

**85596**

Scale 1:50

4¾ x 17½ x 2 in.  
119 x 49 x 52 mm



HAMMER



DIGGING BUCKET



DITCH BUCKET



# Cat® 309 CR Mini Hydraulic Excavator

ITEM NUMBER

**85592**

Scale 1:50

4% x 1% x 2 in.  
119 x 49 x 52 mm

DIGGING BUCKET



DITCH BUCKET



AUGER



# Cat® 308E2 CR SB Mini Hydraulic Excavator

ITEM NUMBER

**85239**

Scale 1:32

8% x 3% x 4% in.  
206 x 84 x 108 mm

AUGER



HYDRAULIC HAMMER



# Cat 315 Hydraulic Excavator



ITEM NUMBER

**85957**

Scale 1:50

6 x 2½ x 2 in.  
150 x 60 x 51 mm

# Cat 320 Hydraulic Excavator

Next Generation Design



ITEM NUMBER

**85569**

Scale 1:50

7¼ x 2½ x 3-1/8 in.  
183 x 63 x 80 mm

# Cat® 320 GC Hydraulic Excavator

Next Generation Design



ITEM NUMBER

**85570**

Scale 1:50

7¼ x 2¼ x 3⅞ in.  
183 x 58 x 80 mm

# Cat® 323 Hydraulic Excavator

ITEM NUMBER

**85657**

Scale 1:50

7¼ x 2½ x 3⅞ in.  
183 x 63 x 80 mm



CLEAN UP BUCKET



GRAPPLE



HAMMER



MULTI-PROCESSOR



# Cat<sup>®</sup> 323 Hydraulic Excavator

## Next Generation Design

ITEM NUMBER

**85571**

Scale 1:50

7¼ x 2½ x 3⅝ in.  
183 x 63 x 80 mm



# Cat<sup>®</sup> 330 Next Generation Hydraulic Excavator

ITEM NUMBER

**85585**

Scale 1:50

8¾ x 2¾ x 3⅝ in.  
223 x 67 x 79mm



# Cat 335F L Hydraulic Excavator



ITEM NUMBER

**85925**

Scale 1:50

7¼ x 2½ x 2¼ in.  
196 x 66 x 71 mm

# Cat 336 Hydraulic Excavator

Next Generation Design



ITEM NUMBER

**85586**

Scale 1:50

8¼ x 2¼ x 4¼ in.  
208 x 70 x 111 mm



# Cat® 349F L XE Hydraulic Excavator

ITEM NUMBER

**85943**

Scale 1:50

9 $\frac{9}{16}$  x 2 $\frac{7}{8}$  x 3 $\frac{1}{8}$  in.  
237 x 73 x 81 mm



# Cat® 374D L Hydraulic Excavator

ITEM NUMBER

**85274**

Scale 1:50

10 x 3 $\frac{3}{4}$  x 4 $\frac{1}{4}$  in.  
255 x 95 x 108 mm



# Cat® 395 Next Generation Hydraulic Excavator Mass Excavator Version



ITEM NUMBER

**85959**

Scale 1:50

10½ x 3½ x 4½ in.  
270 x 90 x 110 mm

# Cat® 395 Next Generation Hydraulic Excavator General Purpose Version



ITEM NUMBER

**85709**

Scale 1:50

11½ x 3½ x 4½ in.  
292 x 89 x 114 mm

SHEAR



HAMMER



# Cat® M318 Wheeled Excavator



ITEM NUMBER

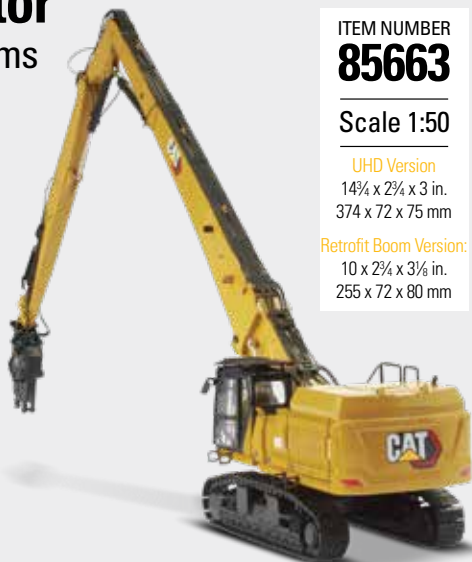
**85956**

Scale 1:50

6¼ x 3¼ x 2 in.  
160 x 85 x 55 mm

# Cat® 352 Ultra High Demolition Hydraulic Excavator

with Interchangeable Booms



ITEM NUMBER

**85663**

Scale 1:50

**UHD Version**

14¾ x 2¾ x 3 in.  
374 x 72 x 75 mm

**Retrofit Boom Version:**

10 x 2¾ x 3¾ in.  
255 x 72 x 80 mm

# Cat® M323F Railroad Wheeled Excavator Safety Yellow



ITEM NUMBER

**85661**

Scale 1:50

6¼ x 2¼ x 3¼ in.  
160 x 59.5 x 82.5 mm

# Cat® M323F Railroad Wheeled Excavator Cat Yellow



ITEM NUMBER

**85662**

Scale 1:50

6¼ x 2¼ x 3¼ in.  
160 x 59.5 x 82.5 mm

# Cat® MH3040 Material Handler



ITEM NUMBER

**85958**

Scale 1:50

17¼ x 3 x 3½ in.  
440 x 80 x 85 mm

# Cat® MD6250 Rotary Blasthole Drill



ITEM NUMBER

**85581**

Scale 1:50

Mast Folded	Mast Extended
9¾ x 4¾ x 13¾ in.	14 x 4¾ x 4¾ in.
245 x 117 x 339 mm	356 x 117 x 104 mm



# Cat® D6 XE LGP Track-Type Tractor with VPAT Blade

ITEM NUMBER

**85554**

Scale 1:50

4 $\frac{1}{8}$  x 3 $\frac{1}{2}$  x 2 $\frac{1}{2}$  in.  
123 X 89 X 63 mm



# Cat® D6 XW Track-Type Tractor with SU Blade

ITEM NUMBER

**85553**

Scale 1:50

5 $\frac{1}{8}$  x 2 $\frac{1}{2}$  x 2 $\frac{1}{8}$  in.  
138 X 67 X 68 mm



# Cat® D8T Track-Type Tractor with 8U Blade

ITEM NUMBER

**85566**

Scale 1:50

6 $\frac{1}{2}$  x 3 $\frac{3}{8}$  x 2 $\frac{1}{8}$  in.  
166 x 85 x 72 mm



# Cat® D9T Track-Type Tractor

ITEM NUMBER

**85944**

Scale 1:50

7 x 3¼ x 3¼ in.  
178 x 96 x 81 mm



# Cat® D3 Dozer

ITEM NUMBER

**85673**

Scale 1:50

4¾ x 2½ x 3¾ in.  
117.5 x 63.5 x 86 mm



# Cat® D5 LGP VPAT Dozer

ITEM NUMBER

**85951**

Scale 1:50

5½ x 3¼ x 2½ in.  
130 x 82.5 x 63.5 mm



# Cat® D5 LGP Fire Suppression Dozer

ITEM NUMBER

**85952**

Scale 1:50

4¾ x 3¼ x 2½ in.  
124 x 82.5 x 63.5 mm





# Cat® D5 XR Fire Suppression Dozer



ITEM NUMBER

**85955**

Scale 1:50

4½ x 2½ x 2½ in.  
114 x 63.5 x 63.5 mm

# Cat® D10 Dozer

ITEM NUMBER

**85711**

Scale 1:50

8 x 4¼ x 3¾ in.  
203 x 105 x 92 mm



# Cat® D11T CD Carrydozer

ITEM NUMBER

**85567**

Scale 1:50

8 $\frac{1}{4}$  x 5 $\frac{1}{4}$  x 4 in.  
226 x 134 x 101 mm



# Cat® D11 Dozer

TKN Design

ITEM NUMBER

**85604**

Scale 1:50

8 $\frac{3}{4}$  x 2 $\frac{5}{8}$  x 3 $\frac{1}{8}$  in.  
223 x 67 x 79mm



# Cat® 906M Wheel Loader



ITEM NUMBER

**85557**

Scale 1:50

4 7/8 x 1 1/8 x 2 1/4 in.  
113 X 42 X 55 mm



# Cat® 910K Wheel Loader



ITEM NUMBER

**85294**

Scale 1:32

7 3/4 x 3 x 4 in.  
198 x 78 x 102 mm

# Cat® 950M Wheel Loader

ITEM NUMBER

**85914**

Scale 1:50

6¾ x 2¾ x 2¾ in.  
171 x 59 x 71 mm



# Cat® 966GC Wheel Loader

ITEM NUMBER

**85682**

Scale 1:50

7 x 2½ x 2½ in.  
182 x 66 x 73 mm



# Cat® 966 Wheel Loader

ITEM NUMBER

**85686**

Scale 1:50

7 x 2½ x 2¼ in.  
182 x 66 x 73 mm



# Cat® 972 XE Wheel Loader

ITEM NUMBER

**85683**

Scale 1:50

7 x 2½ x 2⅝ in.  
182 x 67 x 73 mm



# Cat® 980 Wheel Loader

ITEM NUMBER

**85684**

Scale 1:50

8 x 2 $\frac{3}{4}$  x 3 in.  
201 x 70 x 77 mm



# Cat® 982 XE Wheel Loader

ITEM NUMBER

**85685**

Scale 1:50

8 x 2 $\frac{3}{4}$  x 3 in.  
202 x 73 x 79 mm



# Cat® 420F2 IT Backhoe Loader

ITEM NUMBER

**85233**

Scale 1:50

6 7/8 x 2 1/4 x 3 in.  
168 x 55 x 75 mm



# Cat® 432F2 Side Shift Backhoe Loader

ITEM NUMBER

**85249**

Scale 1:50

6 7/8 x 2 1/4 x 3 in.  
168 x 55 x 75 mm



AUGER



MATERIAL ARM



PALLET FORK



H70  
HAMMER



# Cat 745 Articulated Truck



ITEM NUMBER

**85528**

Scale 1:50

8 $\frac{1}{8}$  x 3 x 3 in.  
227 x 76 x 76 mm

# Cat 794AC Mining Truck



ITEM NUMBER

**85670**

Scale 1:50

12 $\frac{1}{4}$  X 7 $\frac{1}{2}$  X 6 $\frac{1}{8}$  in.  
310 x 193 x 163 mm



# Cat 797F Tier 4 Mining Truck



ITEM NUMBER

**85655**

Scale 1:50

12½ x 8¾ x 5¾ in.  
310 x 208 x 148 mm

# Cat 798AC Mining Truck



ITEM NUMBER

**85671**

Scale 1:50

12½ x 8 x 6¼ in.  
318 x 203 x 159 mm

# Cat<sup>®</sup> 150 Motor Grader

ITEM NUMBER

**85667**

Scale 1:50

8½ x 3¾ x 2⅞ in.  
205 x 86 x 72 mm



# Cat<sup>®</sup> 14 Motor Grader

ITEM NUMBER

**85545**

Scale 1:50

8½ x 3¾ x 3⅜ in.  
217 x 85 x 78 mm



# Cat 16 Motor Grader



ITEM NUMBER

**85507**

Scale 1:50

9½ x 3¾ x 3⅝ in.  
242 x 98 x 81 mm

# Cat 24 Motor Grader



ITEM NUMBER

**85552**

Scale 1:50

13¼ x 5¾ x 3⅝ in.  
336 x 146 x 99 mm



# Cat® C32B Marine Engine



ITEM NUMBER

**85707**

Scale 1:12

8¼ x 5¼ x 5½ in.  
210 x 133 x 143 mm

# Cat® G3616 Gas Compression Engine



ITEM NUMBER

**85706**

Scale 1:50

9 x 5 x 4½ in.  
230 x 130 x 110 mm

# Cat® 988K Wheel Loader with Log Grapple



ITEM NUMBER

**85917**

Scale 1:50

10 $\frac{1}{8}$  x 2 $\frac{1}{8}$  x 3 $\frac{3}{8}$  in.  
275 x 72 x 92 mm

# Cat® 555D Wheel Skidder

ITEM NUMBER

**85932**

Scale 1:50

7 x 2 $\frac{1}{8}$  x 3 $\frac{1}{8}$  in.  
177 x 72 x 78 mm



# Cat® CB13 Tandem Vibratory Roller

ROPS Configuration



ITEM NUMBER

**85594**

Scale 1:50

$3\frac{3}{4} \times 1\frac{1}{8} \times 2\frac{1}{2}$  in.  
96 x 47 x 63 mm

# Cat® CB13 Tandem Vibratory Roller

Cab Configuration



ITEM NUMBER

**85595**

Scale 1:50

$3\frac{3}{4} \times 1\frac{3}{4} \times 2\frac{1}{2}$  in.  
96 x 45 x 63 mm

# Cat® CS11 GC Vibratory Soil Compactor

ITEM NUMBER

**85589**

Scale 1:50

4½ x 1½ x 2½ in.  
113 X 47 X 62 mm



# Cat® CB2.7 Utility Compactor

ITEM NUMBER

**85593**

Scale 1:50

2 x 1½ x 2¼ in.  
51 x 28 x 56 mm



# Cat® AD60 Underground Articulated Truck



WORKING LED LIGHTS



REMOVABLE ROCK LOAD INCLUDED



ITEM NUMBER

**85516**

Scale 1:50

9½ x 2¼ x 3⅜ in.  
242 x 72 x 72 mm

# Cat® 242D3 Skid Steer Loader with Attachments

ITEM NUMBER

**85676**

Scale 1:50

3 x 1½ x 1⅞ in.  
75 x 31.2 x 42 mm



FORK



GRAPPLE





# Cat® 259D3 Compact Track Loader with Attachments

ITEM NUMBER

**85677**

Scale 1:50

3 x 1½ x 1½ in.  
75 x 34 x 42 mm



# Cat® 272D3 Skid Steer Loader

ITEM NUMBER

**85678**

Scale 1:32

5 ½ x 2 x 1½ in.  
141 x 51 x 42 mm



GRAPPLE



FORK



# Cat 272D2 Skid Steer with Attachments

ITEM NUMBER

**85602**

Scale 1:16

12¾ x 6½ x 5¼ in.  
323 x 167 x 135 mm



DRILL



BRUSH



BUCKET



# Cat 297D2 Multi-Terrain Loader with Attachments

ITEM NUMBER

**85603**

Scale 1:16

12¾ x 6½ x 5¼ in.  
323 x 167 x 135 mm



DRILL



FORK



BRUSH



BUCKET

# Cat 657G Wheel Tractor Scraper

ITEM NUMBER

**85542**

Scale 1:125

5¾ x 1½ x 1½ in.

145 x 37 x 39 mm



# Cat 745 Articulated Truck



ITEM NUMBER

**85548**

Scale 1:125

3¾ x 1¼ x 1¼ in.

93 x 32 x 30.5 mm

*Small scale with all the details of a larger model.  
Packaged in our collectible tin.*



**HIGH LINE**  
SERIES™

# SPECIAL BLACK FINISH

## Cat® 315 Excavator

Special Black Finish

ITEM NUMBER

**85957BK**

Scale 1:50

5½ x 2½ x 3¼ in.  
136.5 x 60 x 82.5 mm



## Cat® 242D3 Skid Steer Loader with Attachments

Special Black Finish



ITEM NUMBER

**85676BK**

Scale 1:50

3 x 1½ x 1½ in.  
75 x 31.2 x 42 mm

## Cat® 259D3 Compact Track Loader with Attachments

Special Black Finish



ITEM NUMBER

**85677BK**

Scale 1:50

3 x 1½ x 1½ in.  
75 x 34 x 42 mm

GENERAL BUCKET



FORK



GRAPPLE



## Cat 272D3 Skid Steer Loader

ITEM NUMBER

**28007**

Scale 1:16

10 x 4 $\frac{1}{2}$  x 5 $\frac{1}{2}$  in.  
254 x 111 x 130 mm



## Cat 297D2 Multi Terrain Loader



ITEM NUMBER

**28008**

Scale 1:16

10 x 5 x 5 $\frac{1}{2}$  in.  
254 x 127 x 130 mm



# CONSTRUCTION RC



**420F2 IT Backhoe Loader**  
Item 23005 | 1:35 Scale



## Cat 320 Radio Control Excavator with Grapple and Hammer

ITEM NUMBER

**28005**

Scale 1:16



Stick and Swing  
Movements (8)

Boom and Bucket  
Movements (8)



Hammer



Grapple



# 1:35 Scale CONSTRUCTION RC

## 336 Hydraulic Excavator ITEM 23001



Size: 11.5 x 3.5 x 8 in.  
29.5 x 9.0 x 20.5 cm

## D7E Track-Type Tractor ITEM 23002



Size: 9.5 x 6 x 4.75 in.  
24 x 15.5 x 12 cm



FULL FUNCTION  
RADIO CONTROL



FREQUENCY  
2.4 GHZ



LONG PLAY TIME



AUTHENTIC SCALE  
MODEL





## **950M Wheel Loader** **ITEM 23003**

Size: 10 x 3.5 x 4.75 in  
25.5 x 9 x 10.5 cm



## **770 Mining Truck** **ITEM 23004**



Size: 10.5 x 5.75 x 4 in.  
26.5 x 14.5 x 10.5 cm



**1:24 Scale**

# CONSTRUCTION RC

## **336 Hydraulic Excavator**

**ITEM 25001**



Size: 19.25 x 6.5 x 8.5 in.  
49 x 16.5 x 22 cm



Size: 13 x 8 x 6 in.  
33.5 x 20.5 x 15 cm

## **D7E Track-Type Tractor**

**ITEM 25002**



FULL FUNCTION  
RADIO CONTROL



FREQUENCY  
2.4 GHZ



LIGHT  
FUNCTIONS



SOUND  
FUNCTIONS



AUTO DEMO



INDIVIDUAL  
MOVEMENT



LONG  
PLAY TIME



AUTHENTIC  
SCALE  
MODEL



RECHARGEABLE  
BATTERY

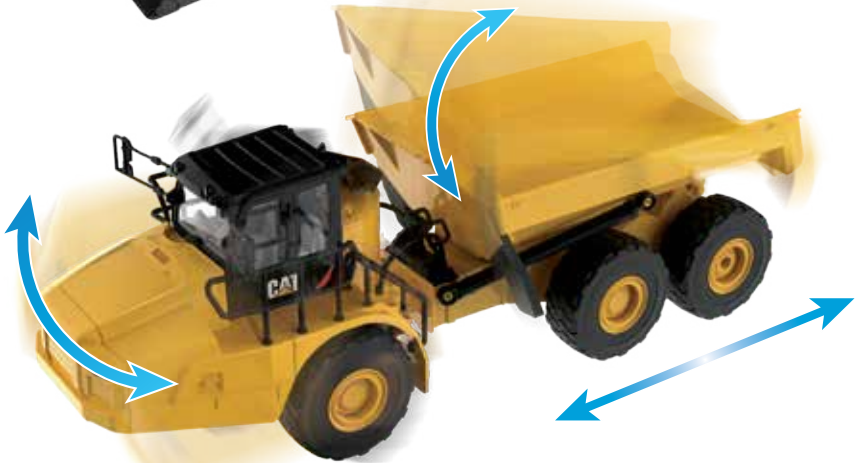


## 950M Wheel Loader

ITEM 25003



Size: 15.5 x 5.25 x 6.5 in.  
39.5 x 13.5 x 16.5 cm



Size: 17.25 x 5.25 x 6 in.  
44 x 13.5 x 15 cm

## 745 Articulated Truck

ITEM 25004



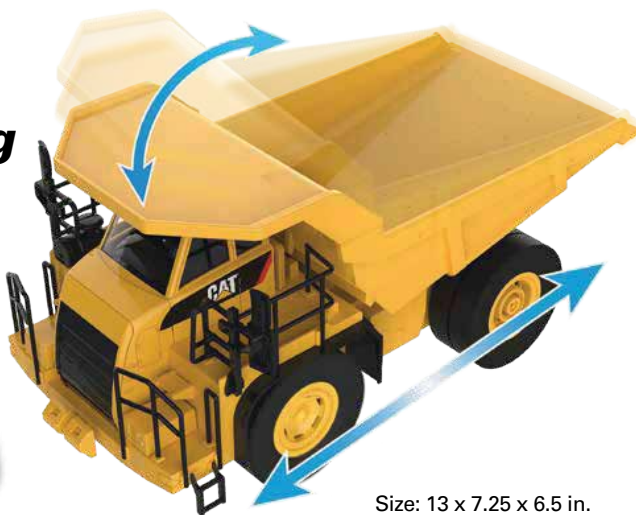
# 1:24 Scale CONSTRUCTION RC



Size: 17 x 5.75 x 10 in.  
43 x 14.5 x 25.5 cm

## 336 Hydraulic Excavator ITEM 25005

## 770 Mining Truck ITEM 25006



Size: 13 x 7.25 x 6.5 in.  
33.5 x 18.5 x 16.5 cm



FULL FUNCTION  
RADIO CONTROL



FREQUENCY  
2.4 GHZ



LONG PLAY TIME



AUTHENTIC SCALE  
MODEL

# VINTAGE SERIES

ITEM NUMBER  
**85579**

Scale 1:50

5¼ x 2½ x 2¾ in.  
133 x 54 x 73 mm

# 966A WHEEL LOADER

*Includes collectible  
metal information card*



# D7C TRACK-TYPE TRACTOR

ITEM NUMBER  
**85577**

Scale 1:50

4¾ x 2¾ x 2¾ in.  
124 x 70 x 60 mm

*Includes collectible  
metal information card*



# WEATHERED SERIES

## Cat 420F2 IT Weathered Backhoe Loader

ITEM NUMBER  
**85755**

Scale 1:50

6 $\frac{1}{2}$  x 2 $\frac{1}{2}$  x 3 in.  
168 x 54 x 76 mm



## Cat 770 Weathered Off-Highway Truck

ITEM NUMBER  
**85756**

Scale 1:50

7 $\frac{1}{2}$  x 3 $\frac{1}{4}$  x 3 $\frac{1}{4}$  in.  
181 x 95 x 82.5 mm



# Cat 745 Weathered Articulated Truck

ITEM NUMBER

**85704**

Scale 1:50

9 x 3 x 3 in.

229 x 76 x 76 mm



# Cat 966M Weathered Wheel Loader

ITEM NUMBER

**85703**

Scale 1:50

7¼ x 2½ x 3 in.

181 x 63.5 x 76 mm



# TRANSPORT SERIES



*1:50 scale Cat® machines, combined with on-highway trucks and trailers, in innovative slide-style packaging.*

## Cat CT660 Day Cab Tractor with Ox Bodies Dump Bed

ITEM NUMBER

**85668**

Scale 1:50

6½ x 2¾ x 2¼ in.  
164 x 60.5 x 70 mm



## Cat CT660 Day Cab Tractor with Metal McNeilus® Concrete Mixer

ITEM NUMBER

**85664**

Scale 1:50

8½ x 2¾ x 3 in.  
216 x 61 x 76mm





## Peterbilt 579 UltraLoft Tractor with Cat Mural Trailer



ITEM NUMBER

**85665**

Scale 1:50

18 x 2 $\frac{7}{8}$  x 3 $\frac{1}{2}$  in.  
452 x 63 x 89mm

## Cat CT660 Day Cab Tractor with Mural Trailer

ITEM NUMBER

**85666**

Scale 1:50

16 $\frac{1}{4}$  x 2 $\frac{3}{8}$  x 3 $\frac{1}{2}$  in.  
422 x 61 x 91mm



**NEW MURAL TRAILERS COMING SOON**

SEE [DIECASTMASTERS.COM](http://DIECASTMASTERS.COM) FOR DETAILS

## International HX520 Tandem Tractor and XL 120 HDG Trailer with Cat 963K Track Loader



ITEM NUMBER

**85599**

Scale 1:50

22 $\frac{1}{8}$  x 2 $\frac{1}{8}$  x 3 $\frac{1}{4}$  in.  
563 x 55 x 83mm

INTERNATIONAL<sup>®</sup> and other International trademarks are licensed by International Truck Intellectual Property Company, LLC.  
All other marks are trademarks of their respective owners.

XL SPECIALIZED TRAILERS is a registered trademark of Bull Moose Heavy Haul, Inc.



*Diecast Masters pays homage to the rich history and remarkable sweep of earthmoving technology, beginning with some of the earliest machines and extending to the most recent.*



Evolution Series models are mounted on special bases and placed in quality flip-top packaging, protected by a black outer sleeve. A full-color booklet, included with the models, traces machine evolution in words and pictures.



# Cat 225 Hydraulic Excavator

7½ x 2¾ x 3 in. | 181 x 60 x 76 mm



*Includes detailed 84-page booklet.*

## EXCAVATOR EVOLUTION SERIES



ITEM NUMBER

**85715**

Scale 1:50



# Cat 323 Hydraulic Excavator

7¼ x 2½ x 3½ in. | 183 x 63 x 80 mm



# OFF-HIGHWAY TRUCK EVOLUTION SERIES



## Cat 770 Off-Highway Truck

*Circa 2007-present day*

7 1/8 x 2 3/4 x 3 1/4 in. | 181 x 96 x 84 mm



Includes detailed 88-page booklet.

## Cat 769 Off-Highway Truck

*1963-2006*

6 1/8 x 3 x 3 in. | 155 x 76 x 77 mm



ITEM NUMBER

**85562**

Scale 1:50

# MOTOR GRADER EVOLUTION SERIES



## Cat Diesel No. 12 Motor Grader

*Circa 1939-1959*

6 $\frac{1}{8}$  x 2 $\frac{1}{8}$  x 2 $\frac{1}{8}$  in. | 154 x 74 x 53 mm

ITEM NUMBER

**85560**

Scale 1:50



## Cat 12M3 Motor Grader

*Circa 2015-present day*

8 x 2 $\frac{1}{8}$  x 2 $\frac{1}{8}$  in. | 203 x 74 x 66 mm

*Includes detailed  
68-page booklet.*



# TRACK LOADER EVOLUTION SERIES

## Cat® 963K Track Loader

*Circa 2015-Present Day*

5½ x 2½ x 3 in. | 150 X 54 X 74 mm



ITEM NUMBER

**85559**

Scale 1:50



*Includes detailed 44-page booklet.*



## Cat® 977D Traxcavator

*Circa 1955-1960*

5 x 2½ x 2¼ in. | 128 x 53 x 69 mm

# SCRAPER EVOLUTION SERIES

## Cat No. 70 Scraper

1951-1957

8¼ x 2¾ x 2½ in. | 210 x 67 x 55 mm



ITEM NUMBER

**85563**

Scale 1:50



*Includes detailed 76-page booklet.*



## Cat 621K Wheel Tractor-Scraper

2014-present day

12½ x 2¾ x 3¼ in. | 317 x 73 x 81 mm



**ELITE**  
**1:125**

*Big Machines That Fit  
In the Palm of Your Hand*

*Some of the Largest Cat® Machines,  
Presented in Exquisite 1:125 Scale*



## Cat® 390F L Hydraulic Excavator

ITEM NUMBER

**85537**

Scale 1:125

4¼ x 1¾ x 2 in.  
108 x 36 x 51 mm





# Cat® D11T Track-Type Tractor



ITEM NUMBER

**85538**

Scale 1:125

3 $\frac{3}{8}$  x 2 $\frac{1}{4}$  x 1 $\frac{1}{2}$  in.  
92 x 53 x 38 mm

# Cat® 24M Motor Grader



ITEM NUMBER

**85539**

Scale 1:125

5 $\frac{3}{8}$  x 2 $\frac{1}{4}$  x 1 $\frac{1}{2}$  in.  
135 x 58 x 40 mm

# Commemorative S E R I E S



*Distinctive models ideal for gifts  
and recognition, in flip-top  
display packaging.*

# Cat D11T Track-Type Tractor

Matte Silver Finish

ITEM NUMBER

**85252**

Scale 1:50

9½ x 5½ x 4¼ in.  
240 x 132 x 105 mm



# Cat D11T Track-Type Tractor

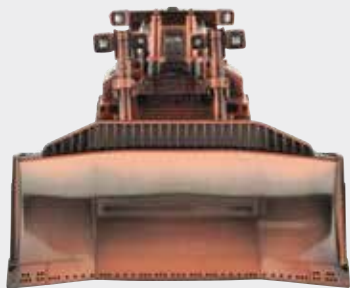
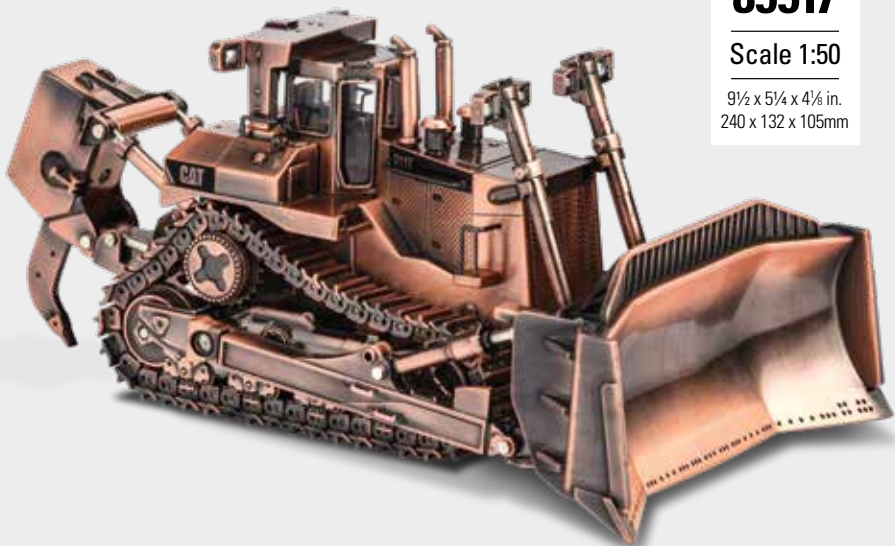
Copper Finish

ITEM NUMBER

**85517**

Scale 1:50

9½ x 5¼ x 4¼ in.  
240 x 132 x 105mm



# Cat 390F L Hydraulic Excavator

Gunmetal Finish

ITEM NUMBER

**85547**

Scale 1:50

11 x 3 $\frac{3}{4}$  x 4 in.  
278 x 92 x 103 mm



**1:64 METAL**  
**CONSTRUCTION METAL**

# Cat® 420 XE Backhoe Loader

ITEM NUMBER  
**85765**  
Scale 1:64



# Cat® 320F L Hydraulic Excavator with Work Tools



MULTI-FUNCTION  
PROCESSOR



CLEANING BUCKET



HAMMER



GRAPPLE



ITEM NUMBER  
**85636**

Scale 1:64

5¼ x 2 x 2½ in.  
146 x 50 x 65 mm

## Cat® 950M Wheel Loader with Log Fork



LOG FORK WITH POLES



ITEM NUMBER

**85635**

Scale 1:64

5¼ x 1¼ x 2¼ in.  
133.5 x 45.5 x 56.5 mm

## Cat® D11 Dozer with 2 Blades and Rear Ripper

JEL BLADE



ITEM NUMBER

**85637**

Scale 1:64

6¼ x 3¾ x 3 in.  
174 x 98.5 x 74 mm



## Cat® 745 Articulated Truck



ITEM NUMBER

**85639**

Scale 1:64

6¾ x 2¾ x 2½ in.  
174.5 x 73 x 63 mm



## CAT® CT660 OX® STAMPEDE DUMP-TRUCK



ITEM NUMBER  
**85633**

Scale 1:64

5 in X 1 $\frac{3}{4}$  x 2 $\frac{1}{4}$  in.  
128 x 47 x 54 mm



ITEM NUMBER  
**85631**

Scale 1:64

3 x 1 $\frac{1}{2}$  x 2 in.  
76 x 36 x 49 mm

## CAT® CB-13 TANDEM VIBRATORY ROLLER WITH CAB

ITEM NUMBER  
**85632**

Scale 1:64

6 $\frac{1}{2}$  x 1 $\frac{3}{4}$  x 2 $\frac{1}{2}$  in.  
165 x 47 x 59 mm



## CAT® CT660 MCNEILUS® BRIDGEMASTER® CONCRETE-MIXER

ITEM NUMBER  
**85630**

Scale 1:64

3 x 1 $\frac{1}{2}$  x 2 in.  
76 x 37 x 49 mm

Ox Bodies® is a trademark  
of Ox Bodies, Inc.

McNeilus and Bridgemaster  
are registered trademarks  
of McNeilus Truck and  
Manufacturing, Inc.

## CAT® CB-13 TANDEM VIBRATORY ROLLER WITH ROPS





ITEM NUMBER  
**85696**

Scale 1:64

6 x 3½ x 2¾ in.  
151 x 88 x 71 mm



**CAT® 775E OFF-HIGHWAY TRUCK**

ITEM NUMBER  
**85694**

Scale 1:64

8⅞ x 2¾ x 4 in.  
220 x 70 x 101 mm



**CAT® 385C  
HYDRAULIC EXCAVATOR**

**CAT® 611 WHEEL TRACTOR  
SCRAPER**



ITEM NUMBER  
**85695**

Scale 1:64

7½ x 2 x 2¼ in.  
191 x 51 x 54 mm

ITEM NUMBER  
**85697**

Scale 1:64

7¾ x 2¼ x 2⅝ in.  
198 x 59 x 68 mm



**CAT® 988H WHEEL LOADER**



## CAT® 272D2 SKID STEER LOADER CAT® 297D2 MULTI TERRAIN LOADER



ITEM NUMBER

**85693**

Scale 1:64

3 x 1½ x 1¾ in.  
135 x 46 x 56 mm

ITEM NUMBER

**85691**

Scale 1:64

4½ x 2 x 1¾ in.  
105 x 50 x 48 mm

*Includes Work Tools*



ITEM NUMBER

**85690**

Scale 1:64

5½ x 2 x 3⅝ in.  
140 x 50 x 78 mm



## CAT® D6R TRACK-TYPE TRACTOR

ITEM NUMBER

**85692**

Scale 1:64

5¾ x 2 x 1¾ in.  
135 x 46 x 56 mm



## CAT® 320F L HYDRAULIC EXCAVATOR



Compact window-box design for flexible shelf placement and product visibility. Vibrant gloss deco on packaging for high presentation value. Secure attachment points to protect model in box. Machine photos and specifications on back of box.



## CAT® 950M WHEEL LOADER



# MICRO CONSTRUCTORS KEYCHAINS



85984

Cat® D8T Track-Type  
Tractor



85981

Cat® 320 Hydraulic  
Excavator



85985

Cat® 770 Off-Highway Truck



85986

Cat® 950M Wheel Loader

# MICRO CONSTRUCTORS



**84521DB**

**Cat CT660 Concrete Mixer**



**85982DB**

**Cat 770 Off-Highway  
Truck**



**84522DB**

**Cat CT660 Dump Truck**

**85980DB**

SOLD ONLY IN AN  
ASSORTMENT PACK OF 24.





**85978DB**

**Cat® D8T Track-Type Tractor**



**85983DB**

**Cat® 950M Wheel Loader**



**85970DB**

**Cat® 315D L Excavator**



**85971DB**

**Cat® D5G XL Track-Type Tractor**



**85972DB**

**Cat® 906 Wheel Loader**



**85973DB**

**Cat® 420E Backhoe Loader**



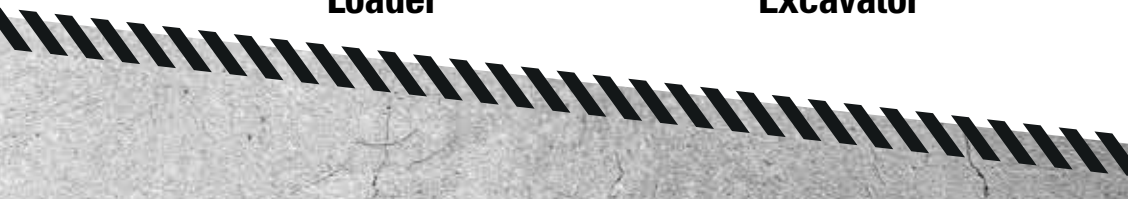
**85974DB**

**Cat® 272C Skid Steer Loader**



**85977DB**

**Cat® 320 Hydraulic Excavator**



# MICRO CONSTRUCTORS



**85980CB**

SOLD ONLY IN  
AN ASSORTMENT  
PACK OF 36.



**85970CB**

**Cat® 315D L Excavator**



**85971CB**

**Cat® D5G XL Track-Type  
Tractor**



**85972CB**

**Cat® 906 Wheel Loader**



**85973CB**

**Cat® 420E Backhoe Loader**



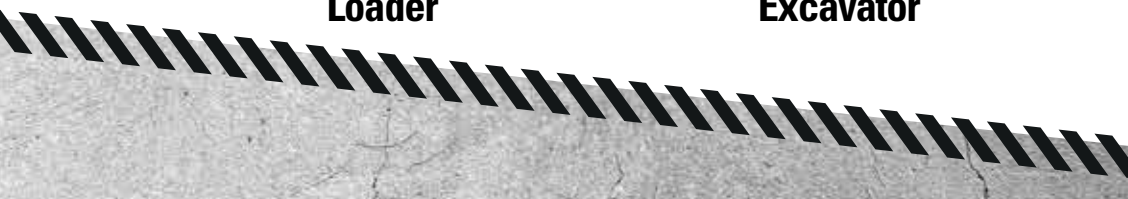
**85974CB**

**Cat® 272C Skid Steer  
Loader**



**85977CB**

**Cat® 320 Hydraulic  
Excavator**



# HO SERIES



*Packaged in collectible metal tins.*



# Cat® 395 Next Generation Hydraulic Excavator Mass Excavator Version



ITEM NUMBER

**85687**

Scale 1:87

6 x 2 x 2½ in.  
152 x 51 x 63.5 mm



*Item Shown for Example Only*

# Cat® 395 Next Generation Hydraulic Excavator General Purpose Version



ITEM NUMBER

**85688**

Scale 1:87

6½ x 2 x 3 in.  
162 x 51 x 76 mm

# Cat® M323F Railroad Wheeled Excavator Safety Yellow

ITEM NUMBER

**85612**

Scale 1:87

3¼ x 1½ x 1¾ in.  
95 x 34 x 46 mm



# Cat® M323F Railroad Wheeled Excavator Cat Yellow

ITEM NUMBER

**85656**

Scale 1:87

3¼ x 1½ x 1¾ in.  
95 x 34 x 46 mm



# Cat® 320D L Hydraulic Excavator

with Clean Up Bucket, Grapple, Hammer & Multi-Processor



ITEM NUMBER  
**85652**

Scale 1:87

4½ x 1¼ x 1¼ in.  
117 x W 45 x 48 mm



# Cat® 6060 Hydraulic Mining Front Shovel

ITEM NUMBER  
**85650**

Scale 1:87

9¼ x 4½ x 4½ in.  
235 x 105 x 115 mm



# Cat® 6060 Hydraulic Mining Front Shovel Coal Configuration

ITEM NUMBER

**85653**

Scale 1:87

9¼ x 4¼ x 4½ in.  
235 x 105 x 114 mm



# Cat® 6060 Hydraulic Mining Shovel



ITEM NUMBER

**85651**

Scale 1:87

9⅝ x 4¼ x 5⅜ in.  
245 x 105 x 135 mm

# Cat 772 Off-Highway Truck

ITEM NUMBER

**85261**

Scale 1:87

4¼ x 2½ x 2¼ in.

108 x 66 x 58mm



# Cat 972M Wheel Loader



ITEM NUMBER

**85949**

Scale 1:87

4 x 1½ x 1½ in.

103 x 37 x 42 mm

# Cat M318D Wheeled Excavator



ITEM NUMBER

**85177**

Scale 1:87

4¼ x 1½ x 1½ in.

107 x 42 x 49mm

# Cat® D5 LGP VPAT Dozer



ITEM NUMBER  
**85953**

Scale 1:87

3 x 1½ x 1½ in.  
76 x 38 x 38 mm

# Cat® D11 Dozer

TKN Design



ITEM NUMBER  
**85659**

Scale 1:87

4¾ x 2¾ x 2½ in.  
120 x 73 x 64 mm

# Cat® CT681 Concrete Mixer

ITEM NUMBER  
**85512**

Scale 1:87

4¾ x 1¾ x 1¾ in.  
116 x 29 x 43 mm



# Cat 336 Next Generation Hydraulic Excavator



ITEM NUMBER

**85658**

Scale 1:87

5 x 1½ x 2¼ in.  
129.5 x 40.5 x 55mm

# Cat 12M3 Motor Grader



ITEM NUMBER

**85520**

Scale 1:87

4¾ x 1¾ x 1½ in.  
117 x 43 x 38 mm

# Cat 730 Articulated Truck

ITEM NUMBER

**85130**

Scale 1:87

4¾ x 1½ x 2 in.  
120 x 37 x 49 mm



# Cat® D9T Track-Type Tractor

ITEM NUMBER

**85209**

Scale 1:87

4 $\frac{3}{8}$  x 2 $\frac{1}{2}$  x 2 $\frac{1}{4}$  in.  
110 x 62 x 57mm



# Cat® 627G Wheel Tractor Scraper

ITEM NUMBER

**85134**

Scale 1:87

6 $\frac{1}{8}$  x 1 $\frac{3}{4}$  x 2 $\frac{1}{4}$  in.  
155 x 45 x 57 mm



# Cat® 450E Backhoe Loader

ITEM NUMBER

**85263**

Scale 1:87

4 $\frac{3}{8}$  x 2 $\frac{1}{4}$  x 1 $\frac{1}{8}$  in.  
110 x 56 x 47mm





## Cat® 320D L Hydraulic Excavator



ITEM NUMBER

**85262**

Scale 1:87

4 $\frac{3}{4}$  x 1 $\frac{3}{4}$  x 1 $\frac{1}{8}$  in.  
117 x 45 x 48mm

## Cat® 972M Wheel Loader with Log Fork



ITEM NUMBER

**85950**

Scale 1:87

4 $\frac{3}{4}$  x 1 $\frac{3}{4}$  x 1 $\frac{1}{8}$  in.  
122 x 35 x 43 mm

## Cat® 966M Wheel Loader

ITEM NUMBER

**85948**

Scale 1:87

3 $\frac{3}{8}$  x 1 $\frac{1}{2}$  x 1 $\frac{1}{8}$  in.  
99 x 37 x 42 mm



# Progress Rail

A Caterpillar Company

ITEM NUMBER

**87001**

Scale 1:87

## PROGRESS RAIL HO SCALE TRAIN SET



PROGRESS RAIL EMD®  
SD70ACe LOCOMOTIVE

**READY TO RUN**

COMPLETE SET • MOTORIZED WITH LIGHT



CAT® M323F RAILROAD  
WHEELED EXCAVATOR



CAT® 12M3 MOTOR GRADER



Easy to use speed &  
directional controller



**CSX 50' FGE INSULATED BOXCAR**



**SUNOCO 10K 3DOME TANK CAR**



**60' OTTX YELLOW FLAT CAR**



**PACKAGE CONTAINS:**

**EMD (Progress Rail) SD70Ace Locomotive**  
with DC analog control, LED lighting  
Progress Rail 100th anniversary decoration

**CAT® M323F Railroad Wheeled Excavator**  
Item Number 85656, with accessories

**CAT® 12M3 Motor Grader**  
Item Number 85520

**60' OTTX Yellow Flat Car**

**Sunoco 10K 3-Dome Tank Car**

**CSX 50' FGE Insulated Boxcar**

All items equipped with metal wheels and  
operating ProtoMax knuckle couplers

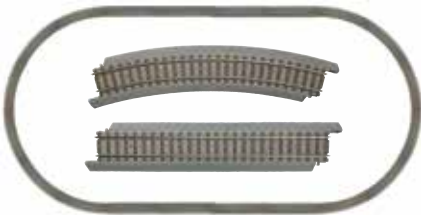
**12 Curved and 4 Straight Track Pieces**  
Dimensions: 63.5" x 45.5" (161.3 cm x 115.6 cm)

Material: Nickel-silver, with gray roadbed;  
Code 100

**Transformer + Controllers**

**Instruction Sheet**

**Durable Walthers Trainline Power-Loc Track™**  
Creates 38" x 54" Oval



# CORE CLASSICS™



*A special collection of the most popular  
Cat® models ever made.*

**HYDRAULIC EXCAVATORS**

85129c	1:50 Cat 308C Mini Hydraulic Excavator	94
85931c	1:50 Cat 320F L Hydraulic Excavator	94
85280c	1:50 Cat 320D L Hydraulic Excavator with Hammer	95
85924c	1:50 Cat 323F L Hydraulic Excavator	95
85199c	1:50 Cat 330D L Hydraulic Excavator	96
85279c	1:50 Cat 336E H Hybrid Hydraulic Excavator	96
85908c	1:50 Cat 340D L Hydraulic Excavator	97
85160c	1:50 Cat 365C Front Shovel	97
85284c	1:50 Cat 390F L Hydraulic Excavator	98
85171c	1:50 Cat M316D Wheeled Excavator	98
85508c	1:50 Cat M318F Wheeled Excavator	99

**TRACK-TYPE TRACTORS**

85281c	1:50 Cat D5K2 LGP Track-Type Tractor	99
85910c	1:50 Cat D6R Track-Type Tractor	100
85197c	1:50 Cat D6T XW VPAT Track-Type Tractor	100
85224c	1:50 Cat D7E Track-Type Tractor	101
85099c	1:50 Cat D8R Series II Track-Type Tractor	101
85158c	1:50 Cat D10T Track-Type Tractor	102
85532c	1:50 Cat D10T2 Track-Type Tractor	102
85025c	1:50 Cat D11R Track-Type Tractor	103
85565c	1:50 Cat® D11T Track-Type Tractor – JEL	103

**WHEEL TRACTOR-SCRAPERS**

85175c	1:50 Cat 657G Wheel Tractor-Scraper	104
--------	-------------------------------------	-----

**WHEEL, TRACK AND BACKHOE LOADERS**

<b>85231c</b>	<b>1:50 Cat 854K Wheel Dozer</b>	<b>93</b>
85143c	1:50 Cat 420E IT Backhoe Loader	104
85928c	1:50 Cat 966M Wheel Loader	105
85296c	1:50 Cat 980K Wheel Loader – Rock Configuration	105
85292c	1:50 Cat 982M Wheel Loader	106
85901c	1:50 Cat 988K Wheel Loader	106
85505c	1:50 Cat 994K Wheel Loader – Rock Config.	107

**OFF-HIGHWAY TRUCKS**

85073c	1:50 Cat 725 Articulated Truck	107
85104c	1:50 Cat 777D Off-Highway Truck	108
85216c	1:50 Cat 785D Mining Truck	108
85276c	1:50 Cat Mega MWT30 Mining Truck Water Tank	109

**MOTOR GRADERS**

85030c	1:50 Cat 140H Motor Grader	109
85236c	1:50 Cat 140M Motor Grader	110
85264c	1:50 Cat 24M Motor Grader	110

**ENGINES & GENERATORS**

85100c	1:25 Cat 3516B Package Generator Set	111
85287c	1:25 Cat CG260-16 Generator	111

**COMPACT CONSTRUCTION & LIF**

85167c	1:32 Cat 272C Skid Steer Loader	111
85226c	1:32 Cat 299C Compact Track Loader	112

**LIFT TRUCKS**

85504c	1:25 Cat EP16(C)PNY Lift Truck	112
85256c	1:25 Cat DP25N Lift Truck	112

**UNDERGROUND MINING**

85140c	1:50 Cat R1700G LHD Underground Mining Loader	113
--------	---	-----

**ON-HIGHWAY TRUCKS**

85503c	1:50 Cat CT660 Day Cab Tractor & XL 120 Low-Profile HDG Trailer	113
85601c	1:50 Cat CT660 Day Cab Tractor & XL 120 Low-Profile HDG Trailer with Cat CB-534D XW Vibratory Asphalt Compactor	113

Items in Red are New or Coming Soon.

# COMING IN 2024

## Cat® 854K Wheel Dozer

ITEM NUMBER

**85231c**

Scale 1:50



# Cat 308C Mini Hydraulic Excavator



ITEM NUMBER  
**85129c**

Scale 1:50

4 $\frac{1}{2}$  x 2 x 2 $\frac{3}{4}$  in.  
112 X 50 X 70mm

# Cat 320F L Hydraulic Excavator



ITEM NUMBER  
**85931c**

Scale 1:50

7 $\frac{1}{4}$  x 2 $\frac{1}{2}$  x 4 in.  
183 x 64 x 102 mm

# Cat 320D L Hydraulic Excavator with Hammer

ITEM NUMBER  
**85280c**

Scale 1:50

7½ x 2¾ x 3⅛ in.  
190 X 68 X 80mm



# Cat 323F L Hydraulic Excavator

ITEM NUMBER  
**85924c**

Scale 1:50

7¼ x 2½ x 4 in.  
183 x 64 x 102 mm



# Cat 330D L Hydraulic Excavator



ITEM NUMBER  
**85199c**

Scale 1:50

8¾ x 2¾ x 3⅜ in.  
223 X 67 X 79mm

# Cat 336E H Hybrid Hydraulic Excavator



ITEM NUMBER  
**85279c**

Scale 1:50

8¾ x 2¾ x 3⅜ in.  
223 x 71 x 100 mm



# Cat 340D L Hydraulic Excavator

ITEM NUMBER

**85908c**

Scale 1:50

8¾ x 3 x 3⅞ in.  
223 x 75 x 97 mm



# Cat 365C Front Shovel

ITEM NUMBER

**85160c**

Scale 1:50

8⅞ x 3½ x 4 in.  
227 X 87 X 102 mm



# Cat® 390F L Hydraulic Excavator

ITEM NUMBER

**85284c**

Scale 1:50

11 x 3½ x 4 in.  
278 x 92 x 103 mm



# Cat® M316D Wheeled Excavator

ITEM NUMBER

**85171c**

Scale 1:50

6½ x 2¼ x 2¼ in.  
169 X 56 X 70 mm



# Cat M318F Wheeled Excavator



ITEM NUMBER  
**85508c**

Scale 1:50

6¾ x 2 x 2½ in.  
172 x 51 x 64 mm

DITCH BUCKET



# Cat D5K2 LGP Track-Type Tractor

ITEM NUMBER  
**85281c**

Scale 1:50

4¾ x 2½ x 2¾ in.  
111 x 66 x 70 mm



# Cat® D6R Track-Type Tractor

ITEM NUMBER

**85910c**

Scale 1:50

5½ x 2½ x 2¾ in.  
136 X 65 X 69mm



# Cat® D6T XW VPAT Track-Type Tractor

ITEM NUMBER

**85197c**

Scale 1:50

5¼ x 3¾ x 2¾ in.  
135 x 93 x 70 mm



# Cat D7E Track-Type Tractor



ITEM NUMBER  
**85224c**

Scale 1:50

5 $\frac{7}{8}$  x 3 $\frac{1}{4}$  x 3 $\frac{3}{8}$  in.  
150 x 81 x 85mm

# Cat D8R Series II Track-Type Tractor



ITEM NUMBER  
**85099c**

Scale 1:50

6 $\frac{1}{4}$  x 3 $\frac{3}{8}$  x 3 $\frac{3}{8}$  in.  
160 X 84 X 78mm

# Cat® D10T Track-Type Tractor

ITEM NUMBER

**85158c**

Scale 1:50

7 $\frac{7}{8}$  X 3 $\frac{1}{8}$  X 3 $\frac{1}{2}$  in.  
188 x 99 x 90 mm



# Cat® D10T2 Track-Type Tractor

ITEM NUMBER

**85532c**

Scale 1:50

7 $\frac{7}{8}$  x 4 $\frac{1}{8}$  x 3 $\frac{1}{2}$  in.  
188 x 98 x 90 mm



# Cat® D11R Track-Type Tractor

ITEM NUMBER

**85025c**

Scale 1:50

8 $\frac{1}{2}$  x 5 x 3 $\frac{3}{4}$  in.  
218 X 128 X 96mm



# Cat® D11T Track-Type Tractor

JEL Design

ITEM NUMBER

**85565c**

Scale 1:50

9 x 4 $\frac{1}{4}$  x 4 in.  
230 x 125 x 101 mm



# Cat® 657G Wheel Tractor-Scraper



ITEM NUMBER  
**85175c**

Scale 1:50

13½ x 3¾ x 4¼ in.  
342 x 91 x 105mm

# Cat® 420E IT Backhoe Loader

ITEM NUMBER  
**85143c**

Scale 1:50

7 x 2½ x 2¾ in.  
180 X 55 X 70mm





# Cat® 966M Wheel Loader



ITEM NUMBER  
**85928c**

Scale 1:50

7 $\frac{1}{8}$  x 2 $\frac{1}{2}$  x 2 $\frac{1}{8}$  in.  
180 x 64 x 73 mm

# Cat® 980K Wheel Loader

Rock Configuration

ITEM NUMBER  
**85296c**

Scale 1:50

7 $\frac{1}{8}$  x 2 $\frac{1}{8}$  x 3 $\frac{1}{4}$  in.  
200 x 73 x 83 mm



# Cat® 982M Wheel Loader

ITEM NUMBER

**85292c**

Scale 1:50

7¼ x 2¼ x 3¼ in.  
198 x 72 x 83 mm



# Cat® 988K Wheel Loader

ITEM NUMBER

**85901c**

Scale 1:50

10⅞ x 3⅞ x 3½ in.  
256 x 80 x 90 mm



# Cat® 994K Wheel Loader

Rock Configuration



ITEM NUMBER

**85505c**

Scale 1:50

15 $\frac{1}{8}$  x 5 $\frac{5}{8}$  x 5 $\frac{5}{8}$  in.  
403 x 136 x 150 mm

# Cat® 725 Articulated Truck



ITEM NUMBER

**85073c**

Scale 1:50

7 $\frac{7}{8}$  x 2 $\frac{3}{4}$  x 3 $\frac{1}{8}$  in.  
199 X 70 X 78mm

# Cat® 777D Off-Highway Truck



ITEM NUMBER

**85104c**

Scale 1:50

7¼ x 4¾ x 4 in.  
196 X 120 X 102mm

# Cat® 785D Mining Truck



ITEM NUMBER

**85216c**

Scale 1:50

9¼ x 5¼ x 4⅝ in.  
235 x 146 x 117 mm

# Cat® Mega MWT30 Mining Truck Water Tank



ITEM NUMBER  
**85276c**

Scale 1:50

9 x 5 3/4 x 5 1/4 in.  
229 x 146 x 133 mm

# Cat® 140H Motor Grader



ITEM NUMBER  
**85030c**

Scale 1:50

7 1/8 x 2 1/4 x 2 5/8 in.  
200 x 58 x 68 mm

# Cat 140M Motor Grader

ITEM NUMBER

**85236c**

Scale 1:50

8 x 2 $\frac{5}{8}$  x 2 $\frac{5}{8}$  in.  
204 x 74 x 67 mm



# Cat 24M Motor Grader

ITEM NUMBER

**85264c**

Scale 1:50

13 x 5 $\frac{3}{4}$  x 3 $\frac{3}{8}$  in.  
331 x 145 x 98 mm



# Cat® 3516B Package Generator Set

ITEM NUMBER  
**85100c**

Scale 1:25

9¼ x 4¼ x 4½ in.  
234 X 107 X 124mm



# Cat® CG260-16 Generator



ITEM NUMBER  
**85287c**

Scale 1:25

# Cat® 272C Skid Steer Loader

ITEM NUMBER  
**85167c**

Scale 1:32

4⅞ x 1⅞ x 2½ in.  
105 X 47 X 64mm



PALLET FORK



GRAPPLE BUCKET



# Cat® 299C Compact Track Loader

ITEM NUMBER  
**85226c**

Scale 1:32

4 1/8 x 1 1/8 x 2 1/2 in.  
105 X 47 X 64mm



PALLET FORK



GRAPPLE BUCKET



# Cat® EP16(C)PNY Lift Truck



ITEM NUMBER  
**85504c**

Scale 1:25

4 5/8 x 1 3/4 x 3 3/4 in.  
117 X 43 X 85mm

# Cat® DP25N Lift Truck

ITEM NUMBER  
**85256c**

Scale 1:25

5 5/8 x 1 7/8 x 3 1/4 in.  
143 X 47 x 84mm





# Cat® R1700G LHD Underground Mining Loader

ITEM NUMBER  
**85140c**

Scale 1:50

8¾ x 2¾ x 2¼ in.  
223 X 61 X 57mm



# Cat® CT660 Day Cab Tractor & XL 120 Low-Profile HDG Trailer



ITEM NUMBER  
**85503c**

Scale 1:50

21½ x 2¾ x 2½ in.  
555 X 60 X 65mm

# Cat® CT660 Day Cab Tractor & XL 120 Low-Profile HDG Trailer with Cat CB-534D XW Vibratory Asphalt Compactor



ITEM NUMBER  
**85601c**

Scale 1:50

21½ x 2¾ x 3¼ in.  
555 X 60 X 78mm

# Index by Item Number

Item	Page	Item	Page	Item	Page	Item	Page	Item	Page
23001	48	85256c	112	85567	26	85665	57	<b>85763</b>	<b>2</b>
23002	48	85261	85	85569	13	85666	57	<b>85765</b>	<b>70</b>
23003	49	85262	89	85570	14	85667	34	<b>85770</b>	<b>2</b>
23004	49	85263	88	85571	15	85668	56	<b>85773</b>	<b>6</b>
23005	46	85264c	110	85577	53	85670	32	<b>85774</b>	<b>7</b>
25001	50	85274	17	85579	53	85671	33	<b>85775</b>	<b>5</b>
25002	50	85276c	109	85581	21	85673	23	85901c	106
25003	51	85279c	96	85585	15	85676	40	85908c	97
25004	51	85280c	95	85586	16	85676BK	44	85910c	100
25005	52	85281c	99	85589	39	85677	41	85914	28
25006	52	85284c	98	85592	12	85677BK	44	85917	37
28005	47	85287c	111	85593	39	85678	41	85924c	95
28007	45	85292c	106	85594	38	<b>85679</b>	<b>7</b>	85925	16
<b>28008</b>	<b>45</b>	85294	27	85595	38	85682	28	85928c	105
85025c	103	85296c	105	85596	11	85683	29	85931c	94
85030c	109	85503c	113	85597	11	85684	30	85932	37
85073c	107	85504c	112	85599	57	85685	30	85943	17
85099c	101	85505c	107	85601c	113	85686	29	85944	23
85100c	111	85507	35	85602	42	<b>85687</b>	<b>81</b>	85948	89
85104c	108	85508c	99	85603	42	<b>85688</b>	<b>81</b>	85949	85
85129c	94	85512	86	85604	26	85690	74	85950	89
85130	87	85516	40	85612	82	85691	74	85951	24
85134	88	85517	68	85630	72	85692	74	85952	24
85140c	113	85520	87	85631	72	85693	74	85953	86
85143c	104	85528	32	85632	72	85694	73	85955	25
85158c	102	85532c	102	85633	72	85695	73	85956	19
85160c	97	85537	64	85635	71	85696	73	85957	13
85167c	111	85538	65	85636	70	85697	73	85957BK	44
85171c	98	85539	65	85637	71	85703	55	85958	21
85175c	104	85542	43	85639	71	85704	55	85959	18
85177	85	85545	34	85650	83	85706	36	85981	75
85197c	100	85547	69	85651	84	85707	36	85984	75
85199c	96	85548	43	85652	83	85709	18	85985	75
85209	88	85552	35	<b>85653</b>	<b>84</b>	<b>85711</b>	<b>25</b>	85986	75
85216c	108	85553	22	85655	33	<b>85713</b>	<b>4</b>	85980DB	76
85224c	101	85554	22	85656	82	<b>85715</b>	<b>59</b>	85980CB	78
85226c	112	85557	27	85657	14	<b>85716</b>	<b>4</b>	87001	90
<b>85231c</b>	<b>93</b>	85559	62	85658	87	<b>85717</b>	<b>3</b>		
85233	31	85560	61	85659	86	<b>85719</b>	<b>3</b>		
85236c	110	85562	60	85661	20	<b>85755</b>	<b>54</b>		
85239	12	85563	63	85662	20	<b>85756</b>	<b>54</b>		
85249	31	85565c	103	85663	19	<b>85757</b>	<b>5</b>		
85252	67	85566	22	85664	56	<b>85758</b>	<b>6</b>		





**CAT D10 DOZER**

**CAT 6060 HYDRAULIC MINING FRONT SHOVEL  
COAL CONFIGURATION**



©2024 Diecast Masters Company Limited  
Room 1801-5, 18/F  
King Palace Plaza  
52A Sha Tsui Road  
Tsuen Wan, N.T., Hong Kong



**14+**

Diecast Masters scale models are adult collectibles, not toys.  
Not intended for children under 14.

[www.cat.com](http://www.cat.com) / [www.caterpillar.com](http://www.caterpillar.com)

©2024 Caterpillar. All Rights Reserved. CAT, CATERPILLAR, LET'S DO THE WORK, their respective logos, "Caterpillar Corporate Yellow", the "Power Edge" and Cat "Modern Hex" trade dress as well as corporate and product identity used herein, are trademarks of Caterpillar and may not be used without permission.

Diecast Masters Company Limited, a licensee of Caterpillar Inc.