



**CAT 6060 HYDRAULIC  
MINING FRONT SHOVEL**

*details on page 90*



*Real Replicas*

**Scale Model Replicas**

**DIECAST MASTERS COMPANY LIMITED**



# Cat® 242D3 Skid Steer Loader with Attachments

Special Black Finish

ITEM NUMBER  
**85676BK**  
Scale 1:50



# Cat® 242D3 Skid Steer Loader with Attachments

ITEM NUMBER  
**85676**  
Scale 1:50



# Cat® 259D3 Compact Track Loader with Attachments

Special Black Finish

ITEM NUMBER  
**85677BK**  
Scale 1:50



# Cat® 2529D3 Compact Track Loader with Attachments

ITEM NUMBER  
**85677**  
Scale 1:50



## Cat® 272D3 Skid Steer Loader



ITEM NUMBER

**85678**

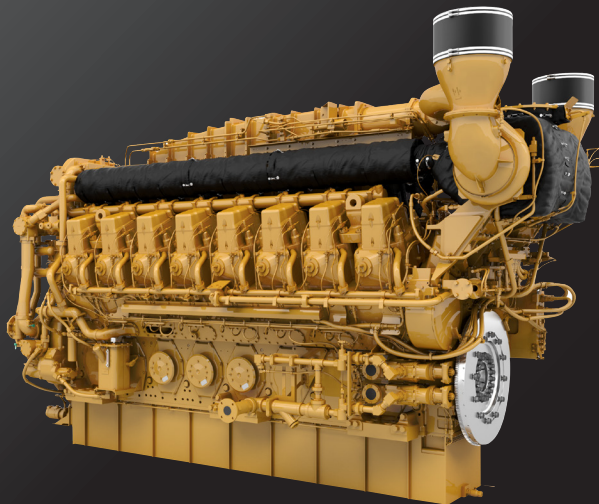
Scale 1:32

GRAPPLE

FORK



## Cat® G3616 Gas Compression Engine



ITEM NUMBER

**85706**

Scale 1:25

## Cat® 315 Hydraulic Excavator



ITEM NUMBER

**85957**

Scale 1:50

*Real Machine Shown*

## Cat® 395 Hydraulic Excavator



ITEM NUMBER

**85959**

Scale 1:50

*Real Machine Shown*



## Cat® M318 Wheeled Excavator



ITEM NUMBER  
**85956**  
Scale 1:50

*Real Machine Shown*

## Cat® MH3040 Material Handler



ITEM NUMBER  
**85958**  
Scale 1:50

*Real Machine Shown*

## Cat® 966GC Wheel Loader



ITEM NUMBER  
**85682**  
Scale 1:50

*Real Machine Shown*

## Cat® 972 XE Wheel Loader



ITEM NUMBER  
**85683**  
Scale 1:50

*Real Machine Shown*

# Cat® 980 Wheel Loader



ITEM NUMBER  
**85684**  
Scale 1:50

*Real Machine Shown*

# Cat® 966 Wheel Loader



ITEM NUMBER  
**85686**  
Scale 1:50

*Real Machine Shown*

# Cat® 982 XE Wheel Loader



ITEM NUMBER  
**85685**  
Scale 1:50

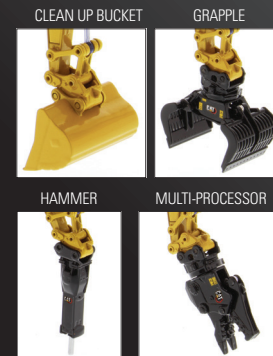
*Real Machine Shown*

# Cat® 320D L Hydraulic Excavator with Clean Up Bucket, Grapple, Hammer & Multi-Processor



ITEM NUMBER  
**85652**  
Scale 1:87

*Item Shown for Example Only*





COMING SOON

# CONSTRUCTION RC



**420F2 IT Backhoe Loader**  
Item 28009 | 1:16 Scale

**AUTHENTIC  
CONSTRUCTION RC  
SCALE MODELS**  
**FULL FUNCTION  
RADIO CONTROL**  
**LIGHTS & SOUND**  
**LONG PLAY TIME**  
**REAL MACHINE  
FUNCTIONALITY**

**VINTAGE  
SERIES**

ITEM NUMBER  
**85579**

Scale 1:50  
Includes collectible  
metal information card

# 966A WHEEL LOADER



# D7C TRACKTYPE TRACTOR

ITEM NUMBER  
**85577**

Scale 1:50  
Includes collectible  
metal information card





ITEM NUMBER

**87001**

Scale 1:87

## PROGRESS RAIL HO SCALE TRAIN SET



**PROGRESS RAIL EMD®  
SD70Ac LOCOMOTIVE**



**CAT® M323F RAILROAD  
WHEELED EXCAVATOR**

**READY TO RUN**

COMPLETE SET • MOTORIZED WITH LIGHT



**CAT® 12M3 MOTOR GRADER**



Easy to use speed &  
directional controller



**CSX 50' FGE INSULATED BOXCAR**



**SUNOCO 10K 3DOME TANK CAR**



**60' OTTX YELLOW FLAT CAR**



**PACKAGE CONTAINS:**

**EMD (Progress Rail) SD70Ac Locomotive**  
with DC analog control, LED lighting  
Progress Rail 100th anniversary decoration

**CAT® M323F Railroad Wheeled Excavator**  
Item Number 85656, with accessories

**CAT® 12M3 Motor Grader**  
Item Number 85520

**60' OTTX Yellow Flat Car**

**Sunoco 10K 3-Dome Tank Car**

**CSX 50' FGE Insulated Boxcar**

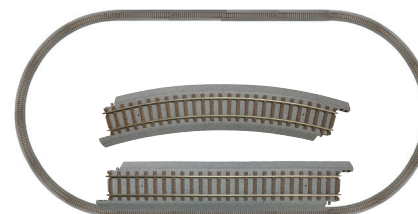
All items equipped with metal wheels and  
operating ProtoMax knuckle couplers

**12 Curved and 4 Straight Track Pieces**  
Dimensions: 63.5" x 45.5" (161.3 cm x 115.6 cm)

Material: Nickel-silver, with gray roadbed;  
Code 100

**Transformer + Controllers**  
**Instruction Sheet**

**Durable Walther's Trainline Power-Loc Track™**  
Creates 38" x 54" Oval



**LOCOMOTIVE ALSO AVAILABLE**

**ITEM NO. 87002 PROGRESS RAIL EMD®  
SD70Ac LOCOMOTIVE**



# HIGH LINE SERIES™

## HYDRAULIC EXCAVATORS

85597	1:50 Cat 301.7 CR Mini Hydraulic Excavator	17
85596	1:50 Cat 308 CR Mini Hydraulic Excavator	17
85592	1:50 Cat 309 CR Mini Hydraulic Excavator	18
85239	1:32 Cat 308E2 CR SB Mini Excavator	18
<b>85957</b>	<b>1:50 Cat 315 Hydraulic Excavator</b>	<b>5</b>
85569	1:50 Cat 320 Hydraulic Excavator	19
85931	1:50 Cat 320F L Hydraulic Excavator	19
85570	1:50 Cat 320 GC Hydraulic Excavator	20
85657	1:50 Cat 323 Next Generation Hydraulic Excavator	20
85571	1:50 Cat 323 Next Generation Hydraulic Excavator	21
85585	1:50 Cat 330 Next Generation Hydraulic Excavator	21
85925	1:50 Cat 335F L Hydraulic Excavator	22
85586	1:50 Cat 336 Next Generation Hydraulic Excavator	22
85279	1:50 Cat 336E H Hybrid Hydraulic Excavator	23
85943	1:50 Cat 349F L XE Hydraulic Excavator	23
85663	1:50 Cat 352 Ultra High Demolition Hydraulic Excavator	24
85274	1:50 Cat 374D L Hydraulic Excavator	24
85284	1:50 Cat 390F L Hydraulic Excavator	25
<b>85959</b>	<b>1:50 Cat 395 Hydraulic Excavator</b>	<b>5</b>
<b>85956</b>	<b>1:50 Cat M318 Wheeled Excavator</b>	<b>6</b>
85508	1:50 Cat M318F Wheeled Excavator	25
85661	1:50 Cat M323F Railroad Wheeled Excavator – Safety Yellow	26
85662	1:50 Cat M323F Railroad Wheeled Excavator – Cat Yellow	26

## TRACK-TYPE TRACTORS

85281	1:50 Cat D5K2 LGP Track-Type Tractor	27
85553	1:50 Cat D6 Track-Type Tractor – SU Blade	27
85554	1:50 Cat D6 XE LGP Track-Type Tractor – VPAT Blade	28
85555	1:50 Cat D7E Track-Type Tractor – Pipeline	28
85566	1:50 Cat D8T Track-Type Tractor – 8U Blade	29
85944	1:50 Cat D9T Track-Type Tractor	29
85532	1:50 Cat D10T2 Track-Type Tractor	30
85604	1:50 Cat D11 Dozer – TKN Design	30
85565	1:50 Cat D11T Track-Type Tractor – JEL	31
85567	1:50 Cat D11T CD Carrydozer	31
<b>85673</b>	<b>1:50 Cat D3 Dozer</b>	<b>32</b>
<b>85952</b>	<b>1:50 Cat D5 LGP Fire Dozer Configuration</b>	<b>32</b>
<b>85951</b>	<b>1:50 Cat D5 LGP VPAT Dozer</b>	<b>33</b>

## WHEEL LOADERS

85557	1:50 Cat 906M Wheel Loader	33
85294	1:32 Cat 910K Wheel Loader	34
85266	1:50 Cat 930K Wheel Loader	34
85914	1:50 Cat 950M Wheel Loader	35
<b>85682</b>	<b>1:50 Cat 966GC Wheel Loader</b>	<b>7</b>
<b>85686</b>	<b>1:50 Cat 966 Wheel Loader</b>	<b>9</b>
85928	1:50 Cat 966M Wheel Loader	35
<b>85683</b>	<b>1:50 Cat 972 XE Wheel Loader</b>	<b>7</b>
85927	1:50 Cat 972M Wheel Loader	36
<b>85684</b>	<b>1:50 Cat 980 Wheel Loader</b>	<b>8</b>
85543	1:50 Cat 980M Wheel Loader	36
<b>85685</b>	<b>1:50 Cat 982 XE Wheel Loader</b>	<b>8</b>
85292	1:50 Cat 982M Wheel Loader	37
85901	1:50 Cat 988K Wheel Loader	37
85505	1:50 Cat 994K Wheel Loader – Rock Configuration	38

## BACKHOE LOADERS

85233	1:50 Cat 420F2 IT Backhoe Loader	38
85234	1:50 Cat 420F2 IT Backhoe Loader – Black	39
85249	1:50 Cat 432F2 Side Shift Backhoe Loader	39

## OFF-HIGHWAY TRUCKS

85528	1:50 Cat 745 Articulated Truck	40
85909	1:50 Cat 775G Off-Highway Truck	40
85670	1:50 Cat 794AC Mining Truck	41
85655	1:50 Cat 797F Tier 4 Mining Truck	41
<b>85671</b>	<b>1:50 Cat 798AC Mining Truck</b>	<b>42</b>

## MOTOR GRADERS

85519	1:50 Cat 12M3 Motor Grader	42
85667	1:50 Cat 150 Motor Grader	43
85545	1:50 Cat 14M3 Motor Grader	43
85507	1:50 Cat 16 Motor Grader	44
85522	1:50 Cat 18M3 Motor Grader – Black	44
85521	1:50 Cat 18M3 Motor Grader	45
85552	1:50 Cat 24 Motor Grader	45

## FORESTRY

85917	1:50 Cat 988K Wheel Loader with Log Grapple	46
85922	1:50 Cat 568 LL Log Loader Configuration	46
85932	1:50 Cat 555D Wheel Skidder	47
85923	1:50 Cat 568 Road Builder Configuration	47

## UNDERGROUND MINING

85297	1:50 Cat R3000H Underground Mining Loader	48
85516	1:50 Cat AD60 Underground Articulated Truck	48

## PAVING MACHINES

85594	1:50 Cat CB13 Tandem Vibratory Roller – ROPS	49
85595	1:50 Cat CB13 Tandem Vibratory Roller – Cab	49
85589	1:50 Cat CS11 GC Vibratory Soil Compactor	50
85591	1:50 Cat A600F Asphalt Paver	50
85593	1:50 Cat CB2.7 Utility Compactor	50
85588	1:50 Cat PM822 Cold Planer	51

## COMPACT CONSTRUCTION

<b>85676</b>	<b>1:50 Cat 242D3 Skid Steer Loader – Black</b>	<b>2</b>
<b>85677</b>	<b>1:50 Cat 259D3 Compact Track Loader – Black</b>	<b>2</b>
<b>85676</b>	<b>1:50 Cat 242D3 Skid Steer Loader</b>	<b>3</b>
<b>85677</b>	<b>1:50 Cat 259D3 Compact Track Loader</b>	<b>3</b>
<b>85678</b>	<b>1:32 Cat 272D3 Skid Steer Loader</b>	<b>4</b>
85526	1:50 Cat 259D Compact Track Loader	51
85602	1:16 Cat 272D2 Skid Steer with Attachments	52
85603	1:16 Cat 297D2 Multi-Terrain Loader with Attachments	52

## 1:125

85542	1:125 Cat 657G Wheel Tractor Scraper	53
85548	1:125 Cat 745 Articulated Truck	53

## MATERIAL HANDLER

<b>85958</b>	<b>1:50 Cat MH3040 Material Handler</b>	<b>6</b>
--------------	---	----------

## ENGINE

<b>85706</b>	<b>1:25 Cat G3616 Gas Compression Engine</b>	<b>4</b>
--------------	--	----------



<b>85579</b>	<b>1:50 Cat 966A Wheel Loader</b>	<b>11</b>
<b>85577</b>	<b>1:50 Cat D7C Track-Type Tractor</b>	<b>11</b>

## Progress Rail

A Caterpillar Company

<b>87001</b>	<b>1:87 Progress Rail HO Scale Train Set</b>	<b>12</b>
<b>87002</b>	<b>1:87 Progress Rail EMD SD70ACe Locomotive</b>	<b>13</b>

Items in Red are New or Coming Soon.



<b>28007</b>	<b>1:16 RC Cat 272D3 Skid Steer Loader</b>	<b>54</b>
<b>28008</b>	<b>1:16 RC Cat 297D2 Multi-Terrain Loader</b>	<b>54</b>
28001	1:20 Cat 330D L Hydraulic Excavator – Diecast RC	54

## CONSTRUCTION RC

<b>28005</b>	<b>1:16 RC Cat 320 Hydraulic Excavator</b>	<b>55</b>
<b>28009</b>	<b>1:16 RC Cat 420F2 IT Backhoe Loader</b>	<b>10</b>
23001	1:35 RC Cat 336 Hydraulic Excavator	56
23002	1:35 RC Cat D7E Track-Type Tractor	56
23003	1:35 RC Cat 950M Wheel Loader	57
23004	1:35 RC Cat 770 Mining Truck	57
25001	1:24 RC Cat 336 Hydraulic Excavator	58
25002	1:24 RC Cat D7E Track-Type Tractor	58
25003	1:24 RC Cat 950M Wheel Loader	59
25004	1:24 RC Cat 745 Articulated Truck	59
25005	1:24 RC Cat 336 Hydraulic Excavator	60
25006	1:24 RC Cat 770 Mining Truck	60



85701	1:50 Cat 320F L Weathered Hydraulic Excavator	61
<b>85703</b>	<b>1:50 Cat 966M Weathered Wheel Loader</b>	<b>61</b>
<b>85704</b>	<b>1:50 Cat 745 Weathered Articulated Truck</b>	<b>61</b>

## TRANSPORT SERIES

85668	1:50 Cat CT660 Day Cab Tractor with Ox Bodies Dump Bed	63
85664	1:50 Cat CT660 Day Cab Tractor with Metal McNeilus Concrete Mixer	63
85665	1:50 Peterbilt 579 UltraLoft Tractor with Cat Mural Trailer	64
85666	1:50 Cat CT660 Day Cab Tractor with Cat Mural Trailer	64
85598	International HX520 Tandem Tractor and XL 120 HDG Trailer with Cat 12M3 Motor Grader	65
85599	International HX520 Tandem Tractor and XL 120 HDG Trailer with Cat 963K Track Loader	65
85600	International HX520 Tandem Tractor and XL 120 HDG Trailer with Cat 349F L XE Hydraulic Excavator	65



<b>85563</b>	<b>Scraper Evolution Series</b>	<b>67</b>
	<i>1:50 Cat 621K Wheel Tractor Scraper</i>	
	<i>1:50 Cat No. 70 Scraper</i>	
85562	Off-Highway Truck Evolution Series	68
	<i>1:50 Cat 769 Off Highway Truck</i>	
	<i>1:50 Cat 770 Off Highway Truck</i>	
85560	Motor Grader Evolution Series	69
	<i>1:50 Cat Diesel No. 12 Motor Grader</i>	
	<i>1:50 Cat 12M3 Motor Grader</i>	
85559	Track Loader Evolution Series	70
	<i>1:50 Cat 977D Traxxavator</i>	
	<i>1:50 Cat 963K Track Loader</i>	

Items in Red are New or Coming Soon.



85672	1:125 Cat 994K Wheel Loader – Copper	72
85536	1:125 Cat 797F Mining Truck	72
85537	1:125 Cat 390F L Hydraulic Excavator	72
85538	1:125 Cat D11T Track-Type Tractor	73
85539	1:125 Cat 24M Motor Grader	73
85535	1:125 Cat 994K Wheel Loader	73

## Commemorative SERIES

85252	1:50 Cat D11T Track-Type Tractor – Matte Silver	75
85517	1:50 Cat D11T Track-Type Tractor – Copper	76
85547	1:50 Cat 390F L Hydraulic Excavator – Gunmetal	77



<b>85639</b>	<b>1:64 Cat 745 Articulated Truck</b>	<b>78</b>
<b>85637</b>	<b>1:64 Cat D11 Dozer</b>	<b>78</b>
<b>85635</b>	<b>1:64 Cat 950M Wheel Loader with Log Fork</b>	<b>79</b>
<b>85636</b>	<b>1:64 Cat 320F L Hydraulic Excavator with Tools</b>	<b>79</b>
85630	1:64 Cat CB-13 Tandem Vibratory Roller – ROPS	80
85631	1:64 Cat CB-13 Tandem Vibratory Roller – CAB	80
85632	1:64 Cat CT660 McNeilus Bridgmaster Concrete Mixer	80
85633	1:64 Cat CT660 OX Stamped Dump Truck	80
85694	1:64 Cat 385C L Hydraulic Excavator	81
85695	1:64 Cat 611 Wheel Tractor Scraper	81
85696	1:64 Cat 775E Off-Highway Truck	81
85697	1:64 Cat 988H Wheel Loader	81
85690	1:64 Cat 320F L Hydraulic Excavator	82
85691	1:64 Cat D6R Track-Type Tractor	82
85692	1:64 Cat 950M Wheel Loader	82
85693	1:64 Cat 272D2 Skid Steer Loader & 1:64 Cat 297D2 Compact Track Loader	82

## MICRO CONSTRUCTORS

85984	Cat Micro D8T Track-Type Tractor	83
85981	Cat Micro 320 Hydraulic Excavator Keychain	83
85985	Cat Micro 770 Off-Highway Truck Keychain	83
85986	Cat Micro 950M Wheel Loader Keychain	83
85980DB	Assortment Pack in Clear Display Box	84
85980CB	Assortment Pack in Closed Box	86

## HO SERIES

<b>85652</b>	<b>1:87 Cat 320D L Hydraulic Excavator with Attachments</b>	<b>9</b>
<b>85953</b>	<b>1:87 Cat D5 LGP VPAT Dozer</b>	<b>89</b>
85612	1:87 Cat M323F Railroad Wheeled Excavator – Safety Yellow	89
85656	1:87 Cat M323F Railroad Wheeled Excavator – Cat Yellow	89
<b>85650</b>	<b>1:87 Cat 6060 Hydraulic Mining Front Shovel</b>	<b>90</b>
<b>85651</b>	<b>1:87 Cat 6060 Hydraulic Mining Shovel</b>	<b>90</b>
85659	1:87 Cat D11 Dozer – TKN Design	91
85512	1:87 Cat CT681 Concrete Mixer	91
85514	1:87 Cat CT681 Dump Truck	91
85658	1:87 Cat 336 Next Generation Hydraulic Excavator	92
85520	1:87 Cat 12M3 Motor Grader	92
85130	1:87 Cat 730 Articulated Truck	92
85261	1:87 Cat 772 Off-Highway Truck	93
85949	1:87 Cat 972M Wheel Loader	93
85177	1:87 Cat M318D Wheeled Excavator	93
85134	1:87 Cat 627G Wheel Tractor Scraper	94
85209	1:87 Cat D9T Track-Type Tractor	94
85263	1:87 Cat 450E Backhoe Loader	94
85262	1:87 Cat 320D L Hydraulic Excavator	95
85950	1:87 Cat 972M Wheel Loader with Log Fork	95
85948	1:87 Cat 966M Wheel Loader	95

# HIGH LINE SERIES™



*Packaged in collectible metal tins.*

## Cat 301.7 CR Mini Hydraulic Excavator



ITEM NUMBER

**85597**

Scale 1:50

2 3/4 x 1 1/8 x 1 1/8 in.  
71 x 28 x 47 mm

DITCH BUCKET



AUGER



## Cat 308 CR Mini Hydraulic Excavator Next Generation Design

ITEM NUMBER

**85596**

Scale 1:50

4 5/8 x 1 1/8 x 2 in.  
119 x 49 x 52 mm



HAMMER



DIGGING BUCKET



DITCH BUCKET





## Cat 309 CR Mini Hydraulic Excavator

ITEM NUMBER  
**85592**

Scale 1:50

4 7/8 x 1 7/8 x 2 in.  
119 x 49 x 52 mm

DIGGING BUCKET



DITCH BUCKET



AUGER



## Cat 320 Hydraulic Excavator

Next Generation Design

ITEM NUMBER  
**85569**

Scale 1:50

7 1/4 x 2 1/2 x 3-1/8 in.  
183 x 63 x 80 mm



## Cat 308E2 CR SB Mini Hydraulic Excavator

ITEM NUMBER  
**85239**

Scale 1:32

8 1/8 x 3 1/4 x 4 1/4 in.  
206 x 84 x 108 mm

AUGER



HYDRAULIC HAMMER



## Cat 320F L Hydraulic Excavator

ITEM NUMBER  
**85931**

Scale 1:50

7 1/4 x 2 1/2 x 4 in.  
183 x 64 x 102 mm



# Cat 320 GC Hydraulic Excavator

Next Generation Design



ITEM NUMBER  
**85570**  
Scale 1:50  
7¼ x 2¼ x 3-1/8 in.  
183 x 58 x 80 mm

# Cat 323 Hydraulic Excavator

Next Generation Design



ITEM NUMBER  
**85571**  
Scale 1:50  
7¼ x 2½ x 3½ in.  
183 x 63 x 80 mm

# Cat 323 Hydraulic Excavator



ITEM NUMBER  
**85657**  
Scale 1:50  
7¼ x 2½ x 3½ in.  
183 x 63 x 80 mm



# Cat 330 Next Generation Hydraulic Excavator



ITEM NUMBER  
**85585**  
Scale 1:50  
8¾ x 2½ x 3½ in.  
223 x 67 x 79mm



## Cat 335F L Hydraulic Excavator



ITEM NUMBER  
**85925**

Scale 1:50

7¾ x 2½ x 2¾ in.  
196 x 66 x 71 mm

## Cat 336E H Hybrid Hydraulic Excavator



ITEM NUMBER  
**85279**

Scale 1:50

8¾ x 2¾ x 3⅞ in.  
223 x 71 x 100 mm

## Cat 336 Hydraulic Excavator

Next Generation Design



ITEM NUMBER  
**85586**

Scale 1:50

8¼ x 2¼ x 4⅞ in.  
208 x 70 x 111 mm

## Cat 349F L XE Hydraulic Excavator



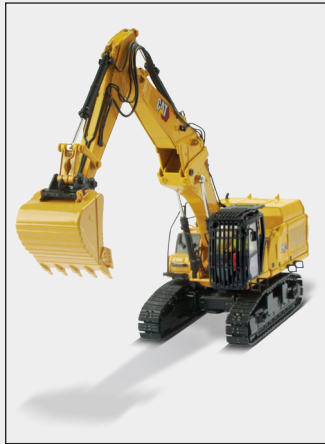
ITEM NUMBER  
**85943**

Scale 1:50

9¾ x 2⅞ x 3⅞ in.  
237 x 73 x 81 mm

# Cat 352 Ultra High Demolition Hydraulic Excavator

with Interchangeable Booms



ITEM NUMBER  
**85663**

Scale 1:50

**UHD Version**  
14 3/4 x 2 3/4 x 3 in.  
374 x 72 x 75 mm

**Retrofit Boom Version:**  
10 x 2 3/4 x 3 3/8 in.  
255 x 72 x 80 mm

# Cat 390F L Hydraulic Excavator



ITEM NUMBER  
**85284**

Scale 1:50

11 x 3 3/8 x 4 in.  
278 x 92 x 103 mm

# Cat 374D L Hydraulic Excavator



ITEM NUMBER  
**85274**

Scale 1:50

10 x 3 3/4 x 4 1/4 in.  
255 x 95 x 108 mm

# Cat M318F Wheeled Excavator



ITEM NUMBER  
**85508**

Scale 1:50

6 3/4 x 2 x 2 1/2 in.  
172 x 51 x 64 mm

DITCH BUCKET





## Cat M323F Railroad Wheeled Excavator Safety Yellow

ITEM NUMBER  
**85661**  
Scale 1:50  
6¼ x 2¼ x 3¼ in.  
160 x 59.5 x 82.5 mm



## Cat M323F Railroad Wheeled Excavator Cat Yellow

ITEM NUMBER  
**85662**  
Scale 1:50  
6¼ x 2¼ x 3¼ in.  
160 x 59.5 x 82.5 mm



## Cat D5K2 LGP Track-Type Tractor

ITEM NUMBER  
**85281**  
Scale 1:50  
4¾ x 2¾ x 2¾ in.  
111 x 66 x 70 mm



## Cat D6 XW Track-Type Tractor with SU Blade

ITEM NUMBER  
**85553**  
Scale 1:50  
5¾ x 2¾ x 2¾ in.  
138 X 67 X 68 mm



## Cat D6 XE LGP Track-Type Tractor

with VPAT Blade



ITEM NUMBER

**85554**

Scale 1:50

4 $\frac{1}{8}$  x 3 $\frac{1}{2}$  x 2 $\frac{1}{2}$  in.  
123 X 89 X 63 mm

## Cat D8T Track-Type Tractor

with 8U Blade



ITEM NUMBER

**85566**

Scale 1:50

6 $\frac{1}{2}$  x 3 $\frac{3}{8}$  x 2 $\frac{1}{8}$  in.  
166 x 85 x 72 mm

## Cat D7E Track-Type Tractor

Pipeline Configuration

ITEM NUMBER

**85555**

Scale 1:50

5 $\frac{1}{2}$  x 3 $\frac{3}{8}$  x 2 $\frac{1}{8}$  in.  
139 x 91 x 74 mm



## Cat D9T Track-Type Tractor

ITEM NUMBER

**85944**

Scale 1:50

7 x 3 $\frac{3}{4}$  x 3 $\frac{1}{4}$  in.  
178 x 96 x 81 mm





## Cat D10T2 Track-Type Tractor

ITEM NUMBER  
**85532**

Scale 1:50

7 $\frac{5}{8}$  x 4 $\frac{1}{8}$  x 3 $\frac{1}{2}$  in.  
188 x 98 x 90 mm



## Cat D11T Track-Type Tractor

JEL Design

ITEM NUMBER  
**85565**

Scale 1:50

9 x 4 $\frac{1}{4}$  x 4 in.  
230 x 125 x 101 mm



## Cat D11 Dozer

TKN Design

ITEM NUMBER  
**85604**

Scale 1:50

8 $\frac{3}{4}$  x 2 $\frac{5}{8}$  x 3 $\frac{1}{8}$  in.  
223 x 67 x 79mm



## Cat D11T CD Carrydozer

ITEM NUMBER  
**85567**

Scale 1:50

8 $\frac{7}{8}$  x 5 $\frac{1}{4}$  x 4 in.  
226 x 134 x 101 mm



## Cat D3 Dozer



**NEW**

ITEM NUMBER

**85673**

Scale 1:50

*Real Machine Shown*

## Cat D5 LGP VPAT Dozer



**NEW**

ITEM NUMBER

**85951**

Scale 1:50

*Real Machine Shown*

## Cat D5 LGP Fire Dozer Configuration



**NEW**

ITEM NUMBER

**85952**

Scale 1:50

*Real Machine Shown*

## Cat 906M Wheel Loader



ITEM NUMBER

**85557**

Scale 1:50

4 $\frac{3}{8}$  x 1 $\frac{1}{2}$  x 2 $\frac{1}{8}$  in.  
113 X 42 X 55 mm



## Cat 910K Wheel Loader



ITEM NUMBER  
**85294**

Scale 1:32

7¼ x 3 x 4 in.  
198 x 78 x 102 mm

## Cat 950M Wheel Loader



ITEM NUMBER  
**85914**

Scale 1:50

6¾ x 2¾ x 2¾ in.  
171 x 59 x 71 mm

## Cat 930K Wheel Loader



ITEM NUMBER  
**85266**

Scale 1:50

6½ x 2½ x 3½ in.  
155 x 54 x 80 mm

PALLET FORK



## Cat 966M Wheel Loader



ITEM NUMBER  
**85928**

Scale 1:50

7½ x 2½ x 2½ in.  
180 x 64 x 73 mm

## Cat® 972M Wheel Loader

ITEM NUMBER

**85927**

Scale 1:50

7 $\frac{3}{8}$  x 2 $\frac{1}{2}$  x 2 $\frac{1}{8}$  in.  
186 x 65 x 73 mm



## Cat® 982M Wheel Loader

ITEM NUMBER

**85292**

Scale 1:50

7 $\frac{3}{4}$  x 2 $\frac{5}{8}$  x 3 $\frac{1}{4}$  in.  
198 x 72 x 83 mm



## Cat® 980M Wheel Loader

ITEM NUMBER

**85543**

Scale 1:50

7 $\frac{7}{8}$  x 2 $\frac{5}{8}$  x 3 $\frac{1}{4}$  in.  
200 x 73 x 83 mm



## Cat® 988K Wheel Loader

ITEM NUMBER

**85901**

Scale 1:50

10 $\frac{1}{8}$  x 3 $\frac{3}{8}$  x 3 $\frac{1}{2}$  in.  
256 x 80 x 90 mm





## Cat 994K Wheel Loader

Rock Configuration



ITEM NUMBER  
**85505**

Scale 1:50

15 7/8 x 5 3/4 x 5 7/8 in.  
403 x 136 x 150 mm

## Cat 420F2 IT Backhoe Loader

Special Black Finish



ITEM NUMBER  
**85234**

Scale 1:50

6 5/8 x 4 1/4 x 3 in.  
168 x 55 x 75 mm

## Cat 420F2 IT Backhoe Loader

ITEM NUMBER  
**85233**

Scale 1:50

6 5/8 x 2 1/4 x 3 in.  
168 x 55 x 75 mm



## Cat 432F2 Side Shift Backhoe Loader



ITEM NUMBER  
**85249**

Scale 1:50

6 5/8 x 2 1/4 x 3 in.  
168 x 55 x 75 mm



## Cat 745 Articulated Truck



ITEM NUMBER  
**85528**

Scale 1:50

8 7/8 x 3 x 3 in.  
227 x 76 x 76 mm

## Cat 794AC Mining Truck



ITEM NUMBER  
**85670**

Scale 1:50

12 1/4 X 7 1/2 X 6 5/8 in.  
310 x 193 x 163 mm

## Cat 775G Off-Highway Truck

ITEM NUMBER  
**85909**

Scale 1:50

8 1/8 x 4 5/8 x 3 3/8 in.  
207 x 117 x 93 mm



## Cat 797F Tier 4 Mining Truck



ITEM NUMBER  
**85655**

Scale 1:50

12 1/8 x 8 3/8 x 5 3/4 in.  
310 x 208 x 148 mm



## Cat 798 AC Mining Truck



ITEM NUMBER  
**85671**  
Scale 1:50



## Cat 150 Motor Grader



ITEM NUMBER  
**85667**

Scale 1:50

8 1/8 x 3 3/8 x 2 1/8 in.  
205 x 86 x 72 mm

## Cat 12M3 Motor Grader



ITEM NUMBER  
**85519**  
Scale 1:50  
8 x 2 1/8 x 2 1/8 in.  
203 x 74 x 66 mm

## Cat 14M3 Motor Grader



ITEM NUMBER  
**85545**  
Scale 1:50  
8 1/2 x 3 3/8 x 3 1/8 in.  
217 x 85 x 78 mm

## Cat 16 Motor Grader

ITEM NUMBER  
**85507**

Scale 1:50

9½ x 3¼ x 3¼ in.  
242 x 98 x 81 mm



## Cat 18M3 Motor Grader

ITEM NUMBER  
**85521**

Scale 1:50

9½ x 4¾ x 3¼ in.  
242 x 110 x 81 mm



## Cat 18M3 Motor Grader Black Finish

ITEM NUMBER  
**85522**

Scale 1:50

9½ x 4¾ x 3¼ in.  
242 x 110 x 81 mm



## Cat 24 Motor Grader

ITEM NUMBER  
**85552**

Scale 1:50

13¼ x 5¾ x 3¼ in.  
336 x 146 x 99 mm





## Cat 988K Wheel Loader with Log Grapple



ITEM NUMBER

**85917**

Scale 1:50

10 $\frac{1}{8}$  x 2 $\frac{1}{8}$  x 3 $\frac{1}{8}$  in.  
275 x 72 x 92 mm

## Cat 555D Wheel Skidder



ITEM NUMBER

**85932**

Scale 1:50

7 x 2 $\frac{1}{8}$  x 3 $\frac{1}{8}$  in.  
177 x 72 x 78 mm

## Cat 568 LL Log Loader Configuration



ITEM NUMBER

**85922**

Scale 1:50

9 $\frac{1}{2}$  x 3 $\frac{1}{8}$  x 4 $\frac{1}{4}$  in.  
243 x 78 x 121 mm

## Cat 568 Road Builder Configuration



ITEM NUMBER

**85923**

Scale 1:50

8 $\frac{5}{8}$  x 3 $\frac{1}{8}$  x 3 $\frac{3}{4}$  in.  
219 x 78 x 95 mm

# Cat R3000H Underground Mining Loader

WORKING LED LIGHTS



ITEM NUMBER  
**85297**

Scale 1:50

9¼ x 2⅞ x 2½ in.  
236 x 72 x 62 mm

# Cat AD60 Underground Articulated Truck



WORKING LED LIGHTS



REMOVABLE ROCK LOAD INCLUDED



ITEM NUMBER  
**85516**

Scale 1:50

9½ x 2⅞ x 3⅞ in.  
242 x 72 x 72 mm

# Cat CB13 Tandem Vibratory Roller ROPS Configuration



ITEM NUMBER  
**85594**

Scale 1:50

3¾ x 1⅞ x 2½ in.  
96 x 47 x 63 mm

# Cat CB13 Tandem Vibratory Roller Cab Configuration



ITEM NUMBER  
**85595**

Scale 1:50

3¾ x 1¾ x 2½ in.  
96 x 45 x 63 mm



## Cat CS11 GC Vibratory Soil Compactor

ITEM NUMBER  
**85589**

Scale 1:50

4½ x 1½ x 2½ in.  
113 X 47 X 62 mm



## Cat A600F Asphalt Paver



ITEM NUMBER  
**85591**

Scale 1:50

5½ x 2½ x 3 in.  
137 X 64 X 77 mm

## Cat CB2.7 Utility Compactor

ITEM NUMBER  
**85593**

Scale 1:50

2 x 1½ x 2¼ in.  
51 x 28 x 56 mm



## Cat PM822 Cold Planer



ITEM NUMBER  
**85588**

Scale 1:50

11¼ x 2½ x 3¼ in.  
300 x 64 x 81 mm

## Cat 259D Compact Track Loader

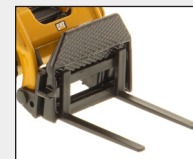
GENERAL PURPOSE BUCKET



LIGHT MATERIAL BUCKET



FORK



GRAPPLE



ITEM NUMBER  
**85526**

Scale 1:50

3 x 1½ x 1½ in.  
76 x 34 x 42 mm

## Cat 272D2 Skid Steer with Attachments

ITEM NUMBER  
**85602**

Scale 1:16

12¾ x 6½ x 5¼ in.  
323 x 167 x 135 mm



DRILL



FORKS

BRUSH



BUCKET



## Cat 297D2 Multi-Terrain Loader with Attachments

ITEM NUMBER  
**85603**

Scale 1:16

12¾ x 6½ x 5¼ in.  
323 x 167 x 135 mm



DRILL



FORK



BRUSH



BUCKET

## Cat 657G Wheel Tractor Scraper

ITEM NUMBER  
**85542**

Scale 1:125

5¾ x 1½ x 1½ in.  
145 x 37 x 39 mm



## Cat 745 Articulated Truck

ITEM NUMBER  
**85548**

Scale 1:125

3¾ x 1¼ x 1¼ in.  
93 x 32 x 30.5 mm



Small scale with all the details of a larger model.  
Packaged in our collectible tin.

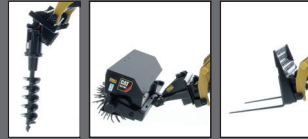




## Cat 272D3 Skid Steer Loader

ITEM NUMBER  
**28007**

Scale 1:16



## Cat 297D2 Multi Terrain Loader



ITEM NUMBER  
**28008**

Scale 1:16

## Cat 330D L Hydraulic Excavator

ITEM NUMBER  
**28001**

Scale 1:20



## Cat 320 Radio Control Excavator with Grapple and Hammer

ITEM NUMBER  
**28005**

Scale 1:16



Stick and Swing Movements (8)    Boom and Bucket Movements (8)



Track Movements (4)



Hammer



Grapple



# 1:35 Scale CONSTRUCTION RC

## 336 Hydraulic Excavator ITEM 23001



Size: 11.5 x 3.5 x 8 in.  
29.5 x 9.0 x 20.5 cm

## 950M Wheel Loader ITEM 23003

Size: 10 x 3.5 x 4.75 in.  
25.5 x 9 x 10.5 cm



## D7E Track-Type Tractor ITEM 23002



Size: 9.5 x 6 x 4.75 in.  
24 x 15.5 x 12 cm

## 770 Mining Truck ITEM 23004



Size: 10.5 x 5.75 x 4 in.  
26.5 x 14.5 x 10.5 cm



FULL FUNCTION  
RADIO CONTROL



FREQUENCY  
2.4 GHz



LONG PLAY TIME



AUTHENTIC SCALE  
MODEL



1:24 Scale

# CONSTRUCTION RC



## 336 Hydraulic Excavator ITEM 25001

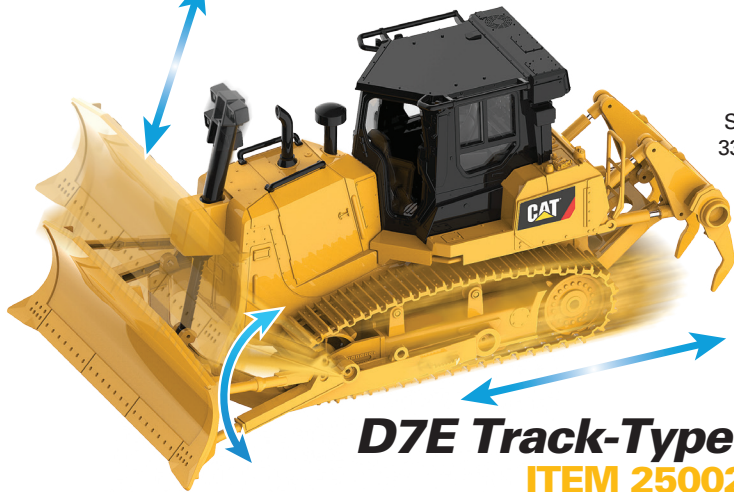


Size: 19.25 x 6.5 x 8.5 in.  
49 x 16.5 x 22 cm

## 950M Wheel Loader ITEM 25003

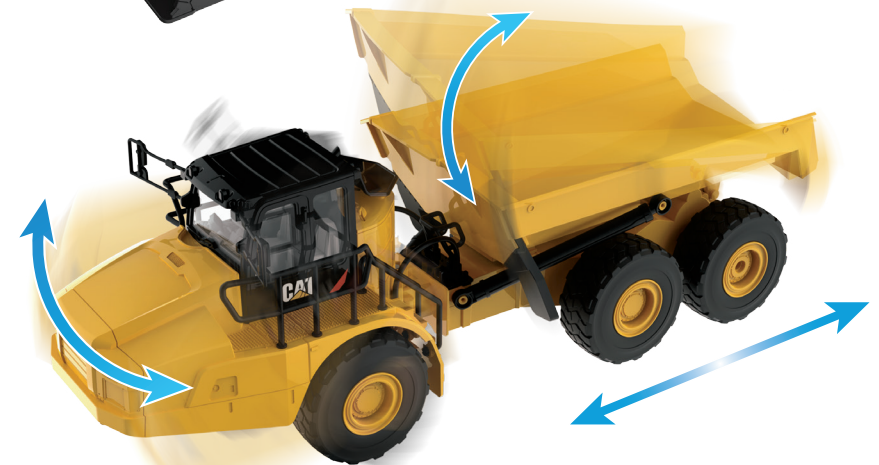


Size: 15.5 x 5.25 x 6.5 in.  
39.5 x 13.5 x 16.5 cm



Size: 13 x 8 x 6 in.  
33.5 x 20.5 x 15 cm

## D7E Track-Type Tractor ITEM 25002



Size: 17.25 x 5.25 x 6 in.  
44 x 13.5 x 15 cm

## 745 Articulated Truck ITEM 25004



FULL FUNCTION  
RADIO CONTROL



FREQUENCY  
2.4 GHZ



LIGHT  
FUNCTIONS



SOUND  
FUNCTIONS



AUTO DEMO



INDIVIDUAL  
MOVEMENT



LONG  
PLAY TIME



AUTHENTIC  
SCALE  
MODEL



RECHARGEABLE  
BATTERY

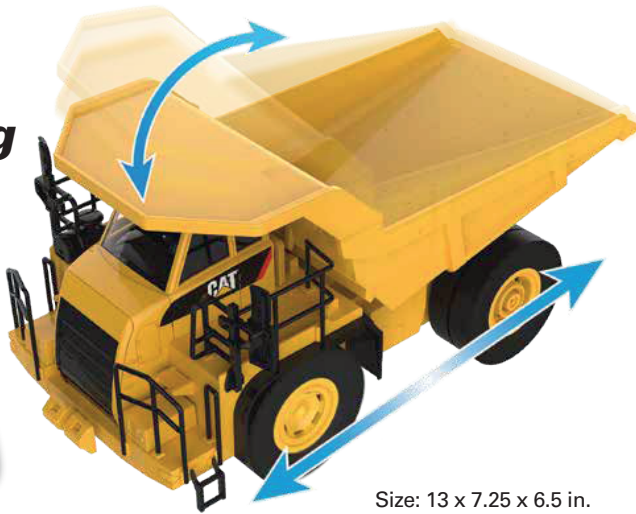
1:24 Scale  
**CONSTRUCTION RC**



Size: 17 x 5.75 x 10 in.  
 43 x 14.5 x 25.5 cm

**336 Hydraulic Excavator**  
**ITEM 25005**

**770 Mining Truck**  
**ITEM 25006**



Size: 13 x 7.25 x 6.5 in.  
 33.5 x 18.5 x 16.5 cm



FULL FUNCTION  
 RADIO CONTROL



FREQUENCY  
 2.4 GHZ



LONG PLAY TIME



AUTHENTIC SCALE  
 MODEL

**WEATHERED  
 SERIES**



Featuring the scuffs and scrapes  
 of a real working machine.



ITEM NUMBER  
**85701**  
 Scale 1:50

**CAT® 320F L WEATHERED  
 HYDRAULIC EXCAVATOR**

**COMING IN 2022**



**CAT® 966M WEATHERED  
 WHEEL LOADER**



ITEM NUMBER  
**85704**  
 Scale 1:50

**CAT® 745 WEATHERED  
 ARTICULATED TRUCK**

ITEM NUMBER  
**85703**  
 Scale 1:50

*Weathered texture simulated.  
 Actual models may vary.*



# TRANSPORT SERIES

1:50 scale Cat® machines, combined with on-highway trucks and trailers, in innovative slide-style packaging.



TRANSPORT  
SERIES

## Cat CT660 Day Cab Tractor with Ox Bodies Dump Bed



ITEM NUMBER  
**85668**

Scale 1:50

6½ x 2½ x 2¾ in.  
164 x 60.5 x 70 mm

## Cat CT660 Day Cab Tractor with Metal McNeilus Concrete Mixer

ITEM NUMBER  
**85664**

Scale 1:50

8½ x 2½ x 3 in.  
216 x 61 x 76mm



TRANSPORT  
SERIES

## Peterbilt 579 UltraLoft Tractor with Cat Mural Trailer



ITEM NUMBER  
**85665**

Scale 1:50

18 x 2½ x 3½ in.  
452 x 63 x 89mm

## Cat CT660 Day Cab Tractor with Mural Trailer



ITEM NUMBER  
**85666**

Scale 1:50

16½ x 2½ x 3½ in.  
422 x 61 x 91mm

## International HX520 Tandem Tractor and XL 120 HDG Trailer with Cat 12M3 Motor Grader



ITEM NUMBER  
**85598**

Scale 1:50

22½ x 2½ x 3½ in.  
563 x 55 x 90mm

## International HX520 Tandem Tractor and XL 120 HDG Trailer with Cat 963K Track Loader



ITEM NUMBER  
**85599**

Scale 1:50

22½ x 2½ x 3¼ in.  
563 x 55 x 83mm

## International HX520 Tandem Tractor and XL 120 HDG Trailer with Cat 349F L XE Hydraulic Excavator



ITEM NUMBER  
**85600**

Scale 1:50

23½ x 3 x 4½ in.  
593 x 75 x 115mm

INTERNATIONAL and other International trademarks are licensed by International Truck Intellectual Property Company, LLC. All other marks are trademarks of their respective owners.

XL SPECIALIZED TRAILERS is a registered trademark of Bull Moose Heavy Haul, Inc.





*Diecast Masters pays homage to the rich history and remarkable sweep of earthmoving technology, beginning with some of the earliest machines and extending to the most recent.*



Evolution Series models are mounted on special bases and placed in quality flip-top packaging, protected by a black outer sleeve. A full-color booklet, included with the models, traces machine evolution in words and pictures.

## SCRAPER EVOLUTION SERIES



### Cat No. 70 Scraper

1951-1957

8¼ x 2½ x 2½ in. | 210 x 67 x 55 mm



ITEM NUMBER  
**85563**  
Scale 1:50



Includes detailed 76-page booklet.



### Cat 621K Wheel Tractor-Scraper

2014-present day

12½ x 2½ x 3¼ in. | 317 x 73 x 81 mm





# OFF-HIGHWAY TRUCK EVOLUTION SERIES



**Cat 770 Off-Highway Truck**

*Circa 2007-present day*  
7 1/8 x 2 3/4 x 3 1/4 in. | 181 x 96 x 84 mm

**Cat 769 Off-Highway Truck**

*1963-2006*  
6 1/8 x 3 x 3 in. | 155 x 76 x 77 mm



Includes detailed 88-page booklet.



ITEM NUMBER  
**85562**  
Scale 1:50

# MOTOR GRADER EVOLUTION SERIES

**Cat Diesel No. 12 Motor Grader**

*Circa 1939-1959*  
6 1/8 x 2 1/8 x 2 1/8 in. | 154 x 74 x 53 mm



ITEM NUMBER  
**85560**  
Scale 1:50



**Cat 12M3 Motor Grader**

*Circa 2015-present day*  
8 x 2 1/8 x 2 1/8 in. | 203 x 74 x 66 mm

Includes detailed 68-page booklet.





# TRACK LOADER EVOLUTION SERIES

## Cat 963K Track Loader

Circa 2015-Present Day

5 7/8 x 2 1/8 x 3 in. | 150 X 54 X 74 mm



ITEM NUMBER  
**85559**

Scale 1:50



Includes detailed 44-page booklet.



## Cat 977D Traxcavator

Circa 1955-1960

5 x 2 1/8 x 2 3/4 in. | 128 x 53 x 69 mm



Big Machines That Fit  
In the Palm of Your Hand



Some of the Largest Cat Machines,  
Presented in Exquisite 1:125 Scale





# Cat® 994K Wheel Loader

Copper Finish

ITEM NUMBER  
**85672**

Scale 1:125

6¼ x 2½ x 2½ in.  
160 x 55 x 61 mm



ITEM NUMBER  
**85584**

AVAILABLE AS AN AN  
ASSORTMENT PACK CONSISTING  
OF 85535/85536/85537/85538/85539

# Cat® 797F Mining Truck

ITEM NUMBER  
**85536**

Scale 1:125

5 x 3¼ x 2½ in.  
126 x 83 x 63 mm



# Cat® 390F L Hydraulic Excavator

ITEM NUMBER  
**85537**

Scale 1:125

4¼ x 1½ x 2 in.  
108 x 36 x 51 mm



# Cat D11T Track-Type Tractor

ITEM NUMBER  
**85538**

Scale 1:125

3¾ x 2½ x 1½ in.  
92 x 53 x 38 mm



# Cat® 24M Motor Grader

ITEM NUMBER  
**85539**

Scale 1:125

5½ x 2¼ x 1½ in.  
135 x 58 x 40 mm



# Cat® 994K Wheel Loader

ITEM NUMBER  
**85535**

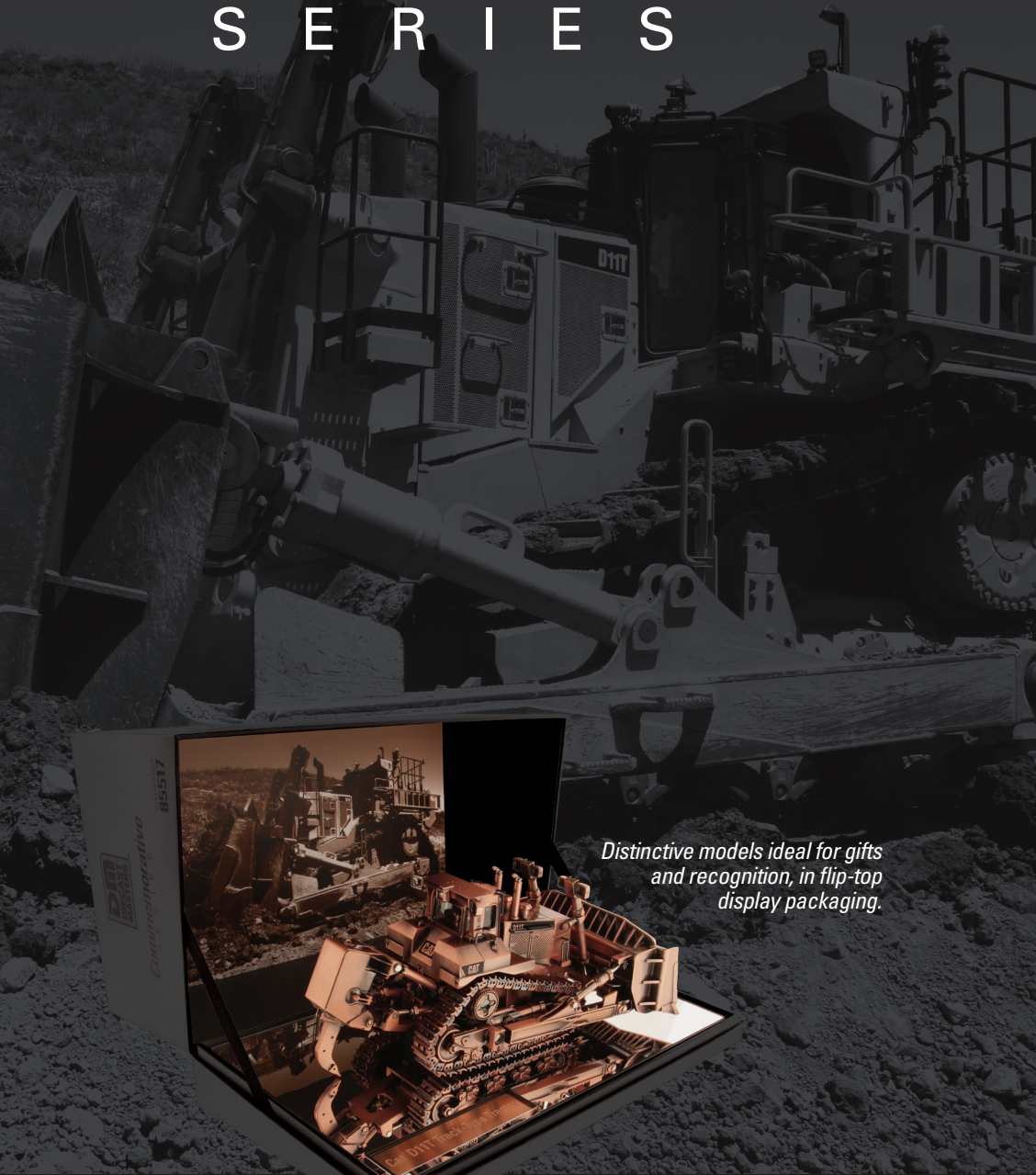
Scale 1:125

6¼ x 2½ x 2½ in.  
160 x 55 x 61 mm





# Commemorative S E R I E S



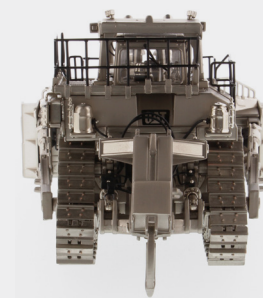
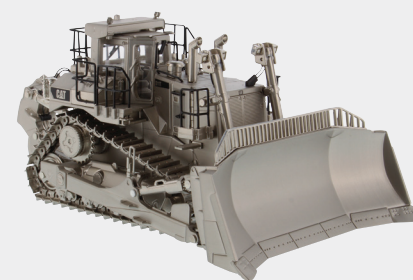
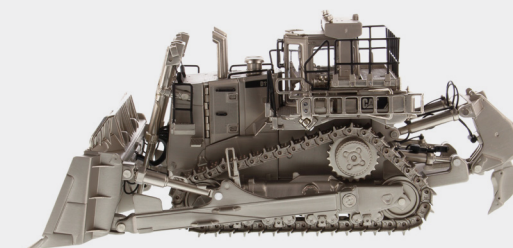
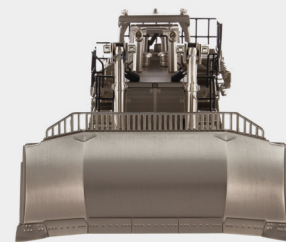
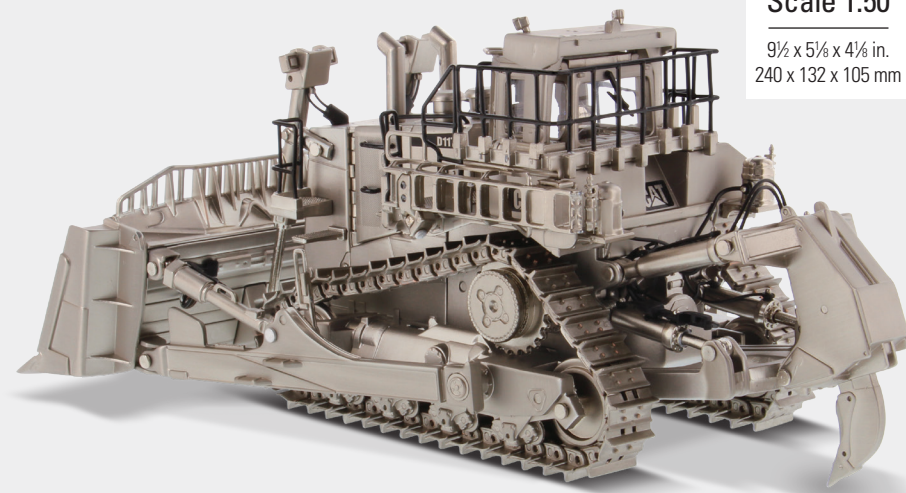
*Distinctive models ideal for gifts  
and recognition, in flip-top  
display packaging.*

## Cat D11T Track-Type Tractor Matte Silver Finish

ITEM NUMBER  
**85252**

Scale 1:50

9½ x 5½ x 4¼ in.  
240 x 132 x 105 mm





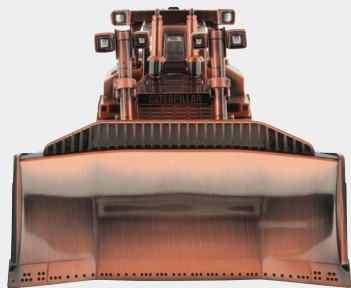
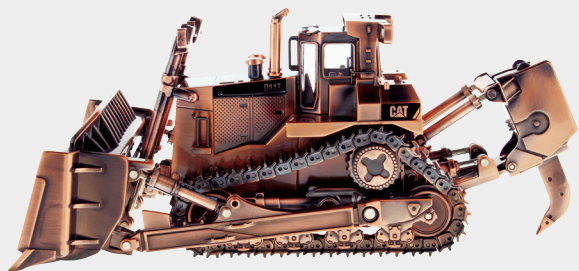
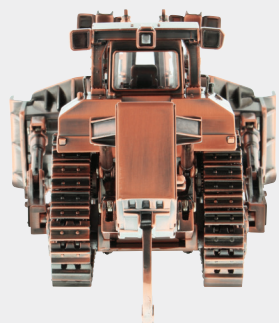
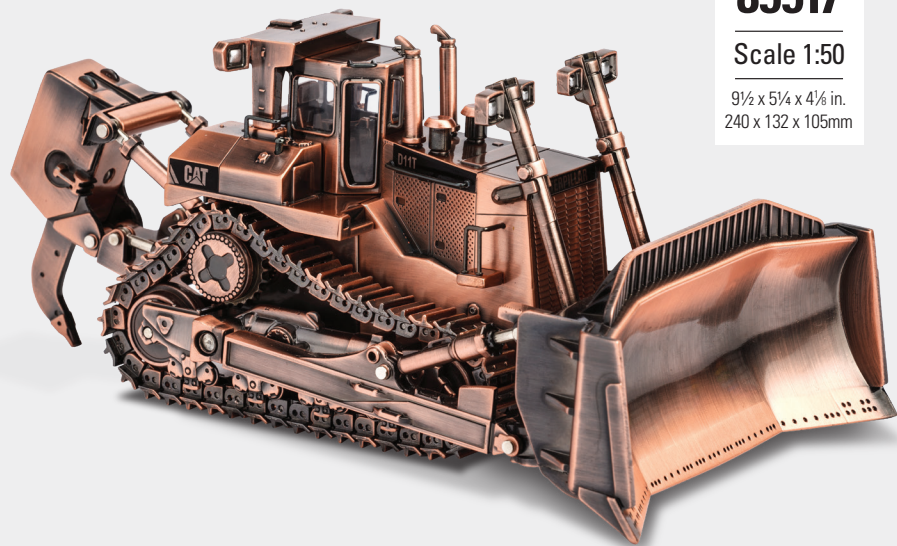
# Cat D11T Track-Type Tractor

Copper Finish

ITEM NUMBER  
**85517**

Scale 1:50

9½ x 5¼ x 4¼ in.  
240 x 132 x 105mm



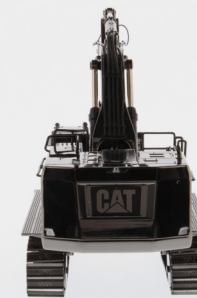
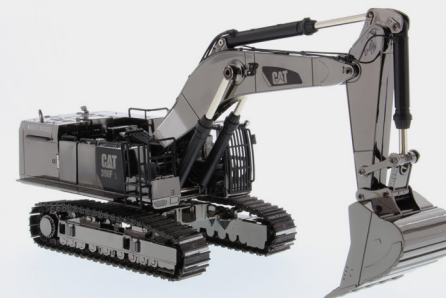
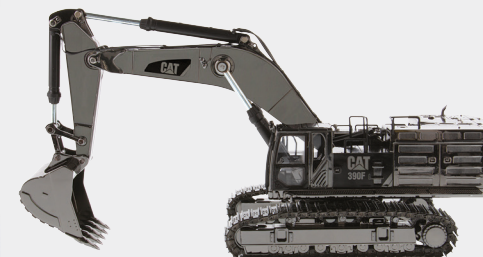
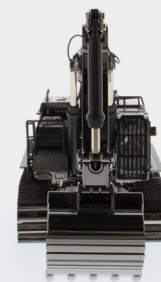
# Cat 390F L Hydraulic Excavator

Gunmetal Finish

ITEM NUMBER  
**85547**

Scale 1:50

11 x 3¾ x 4 in.  
278 x 92 x 103 mm





**1:64 METAL**  
CONSTRUCTION METAL

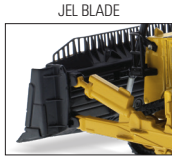
**Cat® D11 Dozer**  
with 2 Blades and Rear Ripper



ITEM NUMBER  
**85637**

Scale 1:64

6¼ x 3¾ x 3 in.  
174 x 98.5 x 74 mm



**Cat® 745 Articulated Truck**

ITEM NUMBER  
**85639**

Scale 1:64

6¼ x 2¾ x 2¼ in.  
174.5 x 73 x 63 mm



**Cat® 950M Wheel Loader with Log Fork**

LOG FORK WITH POLES



ITEM NUMBER  
**85635**

Scale 1:64

5¼ x 1¼ x 2¼ in.  
133.5 x 45.5 x 56.5 mm



**Cat® 320F L Hydraulic Excavator with Work Tools**

ITEM NUMBER  
**85636**

Scale 1:64

5¼ x 2 x 2½ in.  
146 x 50 x 65 mm



MULTI-FUNCTION PROCESSOR CLEANING BUCKET



HAMMER GRAPPLE



**1:64 METAL**  
CONSTRUCTION METAL

**CAT® CT660 OX® STAMPEDE  
DUMP-TRUCK**



ITEM NUMBER  
**85633**

Scale 1:64

5 in X 1 1/4 x 2 1/4 in.  
128 x 47 x 54 mm



ITEM NUMBER  
**85631**

Scale 1:64

3 x 1 1/2 x 2 in.  
76 x 36 x 49 mm

**CAT® CB-13 TANDEM  
VIBRATORY ROLLER WITH CAB**



ITEM NUMBER  
**85632**

Scale 1:64

6 1/2 x 1 3/4 x 2 1/2 in.  
165 x 47 x 59 mm

**CAT® CT660 MCNEILUS®  
BRIDGEMASTER®  
CONCRETE-MIXER**

**CAT® CB-13 TANDEM  
VIBRATORY ROLLER WITH ROPS**



ITEM NUMBER  
**85630**

Scale 1:64

3 x 1 1/2 x 2 in.  
76 x 37 x 49 mm

Ox Bodies® is a trademark  
of Ox Bodies, Inc.

McNeilus and Bridgmaster  
are registered trademarks  
of McNeilus Truck and  
Manufacturing, Inc.

ITEM NUMBER  
**85694**

Scale 1:64

8 5/8 x 2 1/4 x 4 in.  
220 x 70 x 101 mm



**CAT® 385C  
HYDRAULIC EXCAVATOR**

ITEM NUMBER  
**85696**

Scale 1:64

6 x 3 1/2 x 2 3/4 in.  
151 x 88 x 71 mm



**CAT® 775E OFF-HIGHWAY TRUCK**

**CAT® 611 WHEEL TRACTOR  
SCRAPER**



ITEM NUMBER  
**85695**

Scale 1:64

7 1/2 x 2 x 2 1/4 in.  
191 x 51 x 54 mm

ITEM NUMBER  
**85697**

Scale 1:64

7 3/4 x 2 1/4 x 2 3/8 in.  
198 x 59 x 68 mm



**CAT® 988H WHEEL LOADER**





**CAT® 272D2 SKID STEER LOADER  
CAT® 297D2 MULTI TERRAIN LOADER**



ITEM NUMBER  
**85693**

Scale 1:64

3 x 1 1/8 x 1 1/8 in.  
135 x 46 x 56 mm



**CAT® D6R TRACK-TYPE TRACTOR**

ITEM NUMBER  
**85692**

Scale 1:64

5 7/8 x 2 x 1 3/4 in.  
135 x 46 x 56 mm



**CAT® 950M WHEEL LOADER**

*Includes Work Tools*



ITEM NUMBER  
**85690**

Scale 1:64

5 1/2 x 2 x 3 3/8 in.  
140 x 50 x 78 mm



**CAT® 320F L  
HYDRAULIC EXCAVATOR**



Compact window-box design for flexible shelf placement and product visibility. Vibrant gloss deco on packaging for high presentation value. Secure attachment points to protect model in box. Machine photos and specifications on back of box.



**MICRO  
CONSTRUCTORS  
KEYCHAINS**



**85984**

**Cat® D8T Track-Type Tractor**

**85981**

**Cat® 320 Hydraulic Excavator**



**85985**

**Cat® 770 Off-Highway Truck**

**85986**

**Cat® 950M Wheel Loader**



# MICRO CONSTRUCTORS



NEW

**85978DB**  
Cat® D8T Track-Type Tractor



NEW

**85982DB**  
Cat® 770 Off-Highway Truck



NEW

**85983DB**  
Cat® 950M Wheel Loader

**85980DB**  
SOLD ONLY IN AN  
ASSORTMENT PACK OF 24.



**85970DB**  
Cat® 315D L Excavator



**85971DB**  
Cat® D5G XL Track-Type Tractor



**85972DB**  
Cat® 906 Wheel Loader



**85973DB**  
Cat® 420E Backhoe Loader



**85974DB**  
Cat® 272C Skid Steer Loader



**85977DB**  
Cat® 320 Hydraulic Excavator





# MICRO CONSTRUCTORS



**85980CB**  
SOLD ONLY IN  
AN ASSORTMENT  
PACK OF 36.



**85970CB**  
Cat® 315D L Excavator



**85971CB**  
Cat® D5G XL Track-Type  
Tractor



**85972CB**  
Cat® 906 Wheel Loader



**85973CB**  
Cat® 420E Backhoe Loader



**85974CB**  
Cat® 272C Skid Steer  
Loader



**85977CB**  
Cat® 320 Hydraulic  
Excavator



# HO SERIES



Packaged in collectible metal tins.

## Cat D5 LGP VPAT Dozer



ITEM NUMBER  
**85953**  
Scale 1:87



*Real Machine Shown*

## Cat M323F Railroad Wheeled Excavator Safety Yellow

ITEM NUMBER  
**85612**  
Scale 1:87  
3¾ x 1½ x 1¾ in.  
95 x 34 x 46 mm



## Cat M323F Railroad Wheeled Excavator Cat Yellow

ITEM NUMBER  
**85656**  
Scale 1:87  
3¾ x 1½ x 1¾ in.  
95 x 34 x 46 mm





## Cat 6060 Hydraulic Mining Front Shovel

ITEM NUMBER  
**85650**

Scale 1:87



## Cat 6060 Hydraulic Mining Shovel

ITEM NUMBER  
**85651**

Scale 1:87



## Cat D11 Dozer

TKN Design

ITEM NUMBER  
**85659**

Scale 1:87

4¾ x 2¾ x 2½ in.  
120 x 73 x 64 mm



## Cat CT681 Concrete Mixer

ITEM NUMBER  
**85512**

Scale 1:87

4¾ x 1½ x 1¼ in.  
116 x 29 x 43 mm



## Cat CT681 Dump Truck

ITEM NUMBER  
**85514**

Scale 1:87

4¾ x 1½ x 1¼ in.  
110 x 35 x 40 mm



## Cat 336 Next Generation Hydraulic Excavator



ITEM NUMBER  
**85658**

Scale 1:87

5 x 1½ x 2¼ in.  
129.5 x 40.5 x 55mm

## Cat 12M3 Motor Grader



ITEM NUMBER  
**85520**

Scale 1:87

4¾ x 1¾ x 1½ in.  
117 x 43 x 38 mm

## Cat 730 Articulated Truck

ITEM NUMBER  
**85130**

Scale 1:87

4¾ x 1½ x 2 in.  
120 x 37 x 49 mm



## Cat 772 Off-Highway Truck

ITEM NUMBER  
**85261**

Scale 1:87

4¼ x 2¾ x 2¼ in.  
108 x 66 x 58mm



## Cat 972M Wheel Loader



ITEM NUMBER  
**85949**

Scale 1:87

4 x 1½ x 1½ in.  
103 x 37 x 42 mm

## Cat M318D Wheeled Excavator

ITEM NUMBER  
**85177**

Scale 1:87

4¼ x 1½ x 1½ in.  
107 x 42 x 49mm





## Cat D9T Track-Type Tractor

ITEM NUMBER  
**85209**

Scale 1:87

4 $\frac{1}{8}$  x 2 $\frac{1}{2}$  x 2 $\frac{1}{4}$  in.  
110 x 62 x 57mm



## Cat 320D L Hydraulic Excavator

ITEM NUMBER  
**85262**

Scale 1:87

4 $\frac{1}{8}$  x 1 $\frac{3}{4}$  x 1 $\frac{1}{8}$  in.  
117 x 45 x 48mm



## Cat 627G Wheel Tractor Scraper

ITEM NUMBER  
**85134**

Scale 1:87

6 $\frac{1}{8}$  x 1 $\frac{3}{4}$  x 2 $\frac{1}{4}$  in.  
155 x 45 x 57 mm



## Cat 972M Wheel Loader with Log Fork

ITEM NUMBER  
**85950**

Scale 1:87

4 $\frac{3}{4}$  x 1 $\frac{3}{8}$  x 1 $\frac{1}{4}$  in.  
122 x 35 x 43 mm



## Cat 450E Backhoe Loader

ITEM NUMBER  
**85263**

Scale 1:87

4 $\frac{3}{8}$  x 2 $\frac{1}{4}$  x 1 $\frac{1}{8}$  in.  
110 x 56 x 47mm



## Cat 966M Wheel Loader

ITEM NUMBER  
**85948**

Scale 1:87

3 $\frac{3}{8}$  x 1 $\frac{1}{2}$  x 1 $\frac{1}{8}$  in.  
99 x 37 x 42 mm



# CORE CLASSICS™



*A special collection of the most popular  
Cat® models ever made.*

<b>85276c 1:50 Cat® Mega MWT30 Mining Truck Water Tank</b>	<b>98</b>
<b>HYDRAULIC EXCAVATORS</b>	
85129c 1:50 Cat® 308C Mini Hydraulic Excavator	99
85280c 1:50 Cat® 320D L Hydraulic Excavator with Hammer	99
85214c 1:50 Cat® 320D L Hydraulic Excavator	100
85924c 1:50 Cat® 323F L Hydraulic Excavator	100
85199c 1:50 Cat® 330D L Hydraulic Excavator	101
85241c 1:50 Cat® 336D L Hydraulic Excavator	101
85908c 1:50 Cat® 340D L Hydraulic Excavator	102
85160c 1:50 Cat® 365C Front Shovel	102
85171c 1:50 Cat® M316D Wheeled Excavator	103
85098c 1:50 Cat® 5110B Hydraulic Excavator	103
<b>TRACK-TYPE TRACTORS</b>	
85910c 1:50 Cat® D6R Track-Type Tractor	104
85197c 1:50 Cat® D6T XW VPAT Track-Type Tractor	104
85224c 1:50 Cat® D7E Track-Type Tractor	105
85099c 1:50 Cat® D8R Series II Track-Type Tractor	105
85158c 1:50 Cat® D10T Track-Type Tractor	106
85025c 1:50 Cat® D11R Track-Type Tractor	106
<b>WHEEL TRACTOR-SCRAPERS</b>	
85175c 1:50 Cat® 657G Wheel Tractor-Scraper	107
<b>WHEEL AND TRACK LOADERS</b>	
85907c 1:50 Cat® 950 GC Wheel Loader	107
85057c 1:50 Cat® 924G Versalink Wheel Loader	108
85296c 1:50 Cat® 980K Wheel Loader – Rock Configuration	108
<b>BACKHOE LOADERS</b>	
85143c 1:50 Cat® 420E IT Backhoe Loader	109
<b>ENGINES AND GENERATORS</b>	
85287c 1:25 Cat® CG260-16 Generator	109

<b>OFF-HIGHWAY TRUCKS</b>	
85073c 1:50 Cat® 725 Articulated Truck	110
85551c 1:50 Cat® 770 Off-Highway Truck	110
85104c 1:50 Cat® 777D Off-Highway Truck	111
<b>MOTOR GRADERS</b>	
85030c 1:50 Cat® 140H Motor Grader	111
85236c 1:50 Cat® 140M Motor Grader	112
85264c 1:50 Cat® 24M Motor Grader	112
<b>COMPACT CONSTRUCTION</b>	
85167c 1:32 Cat® 272C Skid Steer Loader	113
85226c 1:32 Cat® 299C Compact Track Loader	113
<b>LIFT TRUCKS</b>	
85504c 1:25 Cat® EP16(C)PNY Lift Truck	114
85256c 1:25 Cat® DP25N Lift Truck	114
<b>UNDERGROUND MINING</b>	
85140c 1:50 Cat® R1700G LHD Underground Mining Loader	115
<b>ON-HIGHWAY TRUCKS</b>	
85503c 1:50 Cat® CT660 Day Cab Tractor & XL 120 Low-Profile HDG Trailer	115
85601c 1:50 Cat® CT660 Day Cab Tractor & XL 120 Low-Profile HDG Trailer with Cat® CB-534D XW Vibratory Asphalt Compactor	115



COMING IN 2022

## Cat® Mega MWT30 Mining Truck Water Tank



ITEM NUMBER  
**85276c**  
Scale 1:50



The Core Classics Series is made up of dozens of the most popular diecast models ever made and pays homage to the vast legacy of Cat® machines in the field.

Packaging is reminiscent of the “plain brown” parts boxes with which machine owners and operators are so familiar. With somewhat lower price points, Core Classics models offer an excellent value while still providing Real Replica™ features.

*Real Machine Shown*

## Cat® 308C Mini Hydraulic Excavator



ITEM NUMBER  
**85129c**  
Scale 1:50  
4¾ x 2 x 2¼ in.  
112 X 50 X 70mm

## Cat® 320D L Hydraulic Excavator with Hammer



ITEM NUMBER  
**85280c**  
Scale 1:50  
7½ x 2¾ x 3½ in.  
190 X 68 X 80mm

## Cat 320D L Hydraulic Excavator

ITEM NUMBER  
**85214c**

Scale 1:50

7 $\frac{3}{4}$  x 2 $\frac{1}{2}$  x 2 $\frac{3}{4}$  in.  
187 X 65 X 70mm



## Cat 330D L Hydraulic Excavator

ITEM NUMBER  
**85199c**

Scale 1:50

8 $\frac{3}{4}$  x 2 $\frac{5}{8}$  x 3 $\frac{1}{8}$  in.  
223 X 67 X 79mm



## Cat 323F L Hydraulic Excavator

ITEM NUMBER  
**85924c**

Scale 1:50

7 $\frac{1}{4}$  x 2 $\frac{1}{2}$  x 4 in.  
183 x 64 x 102 mm



## Cat 336D L Hydraulic Excavator

ITEM NUMBER  
**85241c**

Scale 1:50

8 $\frac{3}{4}$  x 2 $\frac{1}{8}$  x 3 $\frac{3}{8}$  in.  
223 x 73 x 85 mm





## Cat 340D L Hydraulic Excavator

ITEM NUMBER  
**85908c**

Scale 1:50

8 $\frac{3}{4}$  x 3 x 3 $\frac{3}{8}$  in.  
223 x 75 x 97 mm



## Cat M316D Wheeled Excavator

ITEM NUMBER  
**85171c**

Scale 1:50

6 $\frac{5}{8}$  x 2 $\frac{1}{4}$  x 2 $\frac{3}{4}$  in.  
169 X 56 X 70 mm



## Cat 365C Front Shovel

ITEM NUMBER  
**85160c**

Scale 1:50

8 $\frac{7}{8}$  x 3 $\frac{1}{2}$  x 4 in.  
227 X 87 X 102 mm



## Cat 5110B Hydraulic Excavator

ITEM NUMBER  
**85098c**

Scale 1:50

12 x 4 $\frac{3}{4}$  x 5 in.  
306 X 120 X 126 mm



## Cat D6R Track-Type Tractor

ITEM NUMBER  
**85910c**

Scale 1:50

5 7/8 x 2 1/2 x 2 3/4 in.  
136 X 65 X 69mm



## Cat D7E Track-Type Tractor

ITEM NUMBER  
**85224c**

Scale 1:50

5 7/8 x 3 1/4 x 3 3/8 in.  
150 x 81 x 85mm



## Cat D6T XW VPAT Track-Type Tractor

ITEM NUMBER  
**85197c**

Scale 1:50

5 1/4 x 3 5/8 x 2 3/4 in.  
135 x 93 x 70 mm



## Cat D8R Series II Track-Type Tractor

ITEM NUMBER  
**85099c**

Scale 1:50

6 1/4 x 3 3/8 x 3 1/8 in.  
160 X 84 X 78mm





## Cat D10T Track-Type Tractor

ITEM NUMBER  
**85158c**

Scale 1:50

7 $\frac{1}{2}$  X 3 $\frac{3}{8}$  X 3 $\frac{1}{2}$  in.  
188 x 99 x 90 mm



## Cat 657G Wheel Tractor-Scraper

ITEM NUMBER  
**85175c**

Scale 1:50

13 $\frac{1}{2}$  x 3 $\frac{3}{8}$  x 4 $\frac{1}{4}$  in.  
342 x 91 x 105mm



## Cat D11R Track-Type Tractor

ITEM NUMBER  
**85025c**

Scale 1:50

8 $\frac{5}{8}$  x 5 x 3 $\frac{3}{4}$  in.  
218 X 128 X 96mm



## Cat 950 GC Wheel Loader

ITEM NUMBER  
**85907c**

Scale 1:50

6 $\frac{1}{2}$  x 2 $\frac{3}{8}$  x 3 in.  
169 x 61 x 76 mm



## Cat® 924G Versalink Wheel Loader

ITEM NUMBER  
**85057c**

Scale 1:50

5¼ x 2 x 2½ in.  
145 X 51 X 67mm



## Cat® 420E IT Backhoe Loader

ITEM NUMBER  
**85143c**

Scale 1:50

7 x 2½ x 2¾ in.  
180 X 55 X 70mm



## Cat® 980K Wheel Loader

Rock Configuration

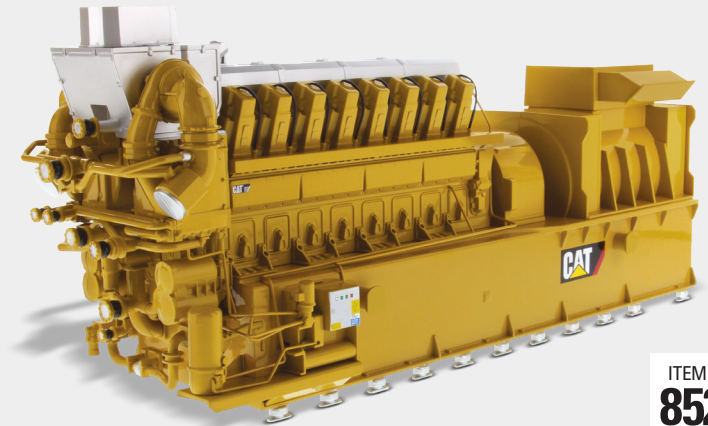
ITEM NUMBER  
**85296c**

Scale 1:50

7⅞ x 2⅞ x 3¼ in.  
200 x 73 x 83 mm



## Cat® CG260-16 Generator



ITEM NUMBER  
**85287c**

Scale 1:25



## Cat 725 Articulated Truck



ITEM NUMBER  
**85073c**

Scale 1:50

7 7/8 x 2 3/4 x 3 1/2 in.  
199 X 70 X 78mm

## Cat 777D Off-Highway Truck



ITEM NUMBER  
**85104c**

Scale 1:50

7 3/4 x 4 3/4 x 4 in.  
196 X 120 X 102mm

## Cat 770 Off-Highway Truck



ITEM NUMBER  
**85551c**

Scale 1:50

7 1/2 x 3 3/4 x 3 1/4 in.  
181 x 96 x 84 mm

## Cat 140H Motor Grader



ITEM NUMBER  
**85030c**

Scale 1:50

7 1/2 x 2 1/4 x 2 5/8 in.  
200 X 58 X 68mm

## Cat 140M Motor Grader

ITEM NUMBER  
**85236c**

Scale 1:50

8 x 2 $\frac{1}{8}$  x 2 $\frac{1}{8}$  in.  
204 x 74 x 67 mm



## Cat 272C Skid Steer Loader

ITEM NUMBER  
**85167c**

Scale 1:32

4 $\frac{1}{8}$  x 1 $\frac{1}{8}$  x 2 $\frac{1}{2}$  in.  
105 X 47 X 64mm



## Cat 24M Motor Grader

ITEM NUMBER  
**85264c**

Scale 1:50

13 x 5 $\frac{1}{4}$  x 3 $\frac{3}{8}$  in.  
331 x 145 x 98 mm



## Cat 299C Compact Track Loader

ITEM NUMBER  
**85226c**

Scale 1:32

4 $\frac{1}{8}$  x 1 $\frac{1}{8}$  x 2 $\frac{1}{2}$  in.  
105 X 47 X 64mm





## Cat EP16(C)PNY Lift Truck

ITEM NUMBER  
**85504c**

Scale 1:25

4 $\frac{5}{8}$  x 1 $\frac{3}{4}$  x 3 $\frac{3}{8}$  in.  
117 X 43 X 85mm



## Cat DP25N Lift Truck

ITEM NUMBER  
**85256c**

Scale 1:25

5 $\frac{5}{8}$  x 1 $\frac{7}{8}$  x 3 $\frac{1}{4}$  in.  
143 X 47 x 84mm



## Cat R1700G LHD Underground Mining Loader

ITEM NUMBER  
**85140c**

Scale 1:50

8 $\frac{3}{4}$  x 2 $\frac{3}{8}$  x 2 $\frac{1}{4}$  in.  
223 X 61 X 57mm



## Cat CT660 Day Cab Tractor & XL 120 Low-Profile HDG Trailer



ITEM NUMBER  
**85503c**

Scale 1:50

21 $\frac{1}{8}$  x 2 $\frac{3}{8}$  x 2 $\frac{1}{2}$  in.  
555 X 60 X 65mm

## Cat CT660 Day Cab Tractor & XL 120 Low-Profile HDG Trailer with Cat CB-534D XW Vibratory Asphalt Compactor



ITEM NUMBER  
**85601c**

Scale 1:50

21 $\frac{1}{8}$  x 2 $\frac{3}{8}$  x 3 $\frac{1}{8}$  in.  
555 X 60 X 78mm

# Index by Item Number

Item	Page	Item	Page	Item	Page	Item	Page	Item	Page
23001	56	85256c	114	85554	28	85656	89	85922	46
23002	56	85261	93	85555	28	85658	92	85923	47
23003	57	85262	95	85557	33	85659	91	85924c	100
23004	57	85263	94	85559	70	85655	41	85925	22
25001	58	85264c	112	85560	69	85657	20	85927	36
25002	58	85266	34	85562	68	85661	26	85928	35
25003	59	85274	24	<b>85563</b>	<b>67</b>	85662	26	85931	19
25004	59	<b>85276c</b>	<b>98</b>	85565	31	85663	24	85932	47
25005	60	85279	23	85566	29	85664	63	85943	23
25006	60	85280c	99	85567	31	85665	64	85944	29
28001	54	85281	27	85569	19	85666	64	85948	95
<b>28005</b>	<b>55</b>	85284	25	85570	20	85667	43	85949	93
<b>28007</b>	<b>54</b>	85287c	109	85571	21	85668	63	85950	95
<b>28008</b>	<b>54</b>	85292	37	<b>85577</b>	<b>11</b>	85670	41	<b>85951</b>	<b>33</b>
<b>28009</b>	<b>10</b>	85294	34	<b>85579</b>	<b>11</b>	<b>85671</b>	<b>42</b>	<b>85952</b>	<b>32</b>
85025c	106	85296c	108	85584	72	85672	72	<b>85953</b>	<b>89</b>
85030c	111	85297	48	85585	21	<b>85673</b>	<b>32</b>	<b>85956</b>	<b>6</b>
85057c	108	85503c	115	85586	22	<b>85676</b>	<b>3</b>	<b>85957</b>	<b>5</b>
85073c	110	85504c	114	85588	51	<b>85676BK</b>	<b>2</b>	<b>85958</b>	<b>6</b>
85098c	103	85505	38	85589	50	<b>85677</b>	<b>3</b>	<b>85959</b>	<b>5</b>
85099c	105	85507	44	85591	50	<b>85677BK</b>	<b>2</b>	85981	83
85104c	111	85508	25	85592	18	<b>85678</b>	<b>4</b>	<b>85984</b>	<b>83</b>
85129c	99	85512	91	85593	50	<b>85682</b>	<b>7</b>	85985	83
85130	92	85514	91	85594	49	<b>85683</b>	<b>7</b>	85986	83
85134	94	85516	48	85595	49	<b>85684</b>	<b>8</b>	85980DB	84
85140c	115	85517	76	85596	17	<b>85685</b>	<b>8</b>	85980CB	86
85143c	109	85519	42	85597	17	<b>85686</b>	<b>9</b>	<b>87001</b>	<b>12</b>
85158c	106	85520	92	85598	65	85690	82	<b>87002</b>	<b>13</b>
85160c	102	85521	45	85599	65	85691	82		
85167c	113	85522	44	85600	65	85692	82		
85171c	103	85526	51	85601c	115	85693	82		
85175c	107	85528	40	85602	52	85694	81		
85177	93	85532	30	85603	52	85695	81		
85197c	104	85535	73	85604	30	85696	81		
85199c	101	85536	72	85612	89	85697	81		
85209	94	85537	72	85630	80	85701	61		
85214c	100	85538	73	85631	80	<b>85703</b>	<b>61</b>		
85224c	105	85539	73	85632	80	<b>85704</b>	<b>61</b>		
85226c	113	85542	53	85633	80	<b>85706</b>	<b>4</b>		
85233	38	85543	36	<b>85635</b>	<b>79</b>	85901	37		
85234	39	85545	43	<b>85636</b>	<b>79</b>	85907c	107		
85236c	112	85547	77	<b>85637</b>	<b>78</b>	85908c	102		
85239	18	85548	53	<b>85639</b>	<b>78</b>	85909	40		
85241c	101	85551c	110	<b>85650</b>	<b>90</b>	85910c	104		
85249	39	85552	45	<b>85651</b>	<b>90</b>	85914	35		
85252	75	85553	27	<b>85652</b>	<b>9</b>	85917	46		

Items in Red are New or Coming Soon.

## LOOK TO DIECAST MASTERS FOR TOP-QUALITY "REAL REPLICAS" IN 1:50, 1:87, 1:125 AND OTHER SCALES.

Our High Line Series features scale models of the newest Cat® machines, packaged in full-color metal boxes. Our Core Classics Series models reflect the scope of machines working every day at construction sites, mines and quarries, agricultural and industrial sites. Our Commemorative Series models demonstrate unique takes on very special collectables. And our Elite Series models bring the largest Cat® machines down to a size you can hold in the palm of your hand – in exquisite 1:125 scale.

Our **NEW** Vintage Series highlights historic models while the Evolution Series brings together old and new Cat® machine models. And our Transport Series includes on-highway trucks and trailers from several major brands. Also **NEW** in 2022 is our Progress Rail train set. And for collectors interested in radio control models, our ConstructionRC line continues to offer additional machines in 1:16, 1:24 and 1:35 scale.

Diecast Masters models are available for sale at Cat® Dealers, retail stores, and at many on-line merchants. If you need help locating a seller in your part of the world, please visit [DiecastMasters.com](https://www.DiecastMasters.com) and select where to purchase.





## CAT M323F RAILROAD WHEELED EXCAVATORS

*details on page 26*



©2022 Diecast Masters Company Limited  
Room 1801-5, 18/F  
King Palace Plaza  
52A, Sha Tsui Road  
Tsuen Wan, N.T., Hong Kong



**14+**

Diecast Masters scale models are adult collectibles, not toys.  
Not intended for children under 14.

[www.cat.com](http://www.cat.com) / [www.caterpillar.com](http://www.caterpillar.com)

©2022 Caterpillar. CAT, CATERPILLAR, their respective logos, "Caterpillar Yellow," the "Power Edge" trade dress as well as corporate and product identity used herein, are trademarks of Caterpillar and may not be used without permission. Diecast Masters Company Limited, a licensee of Caterpillar Inc.